

Arizona Power Authority

1810 W. Adams St.
Phoenix, AZ 85007
(602) 368-4265
www.powerauthority.org



Commission

Russell L. Jones - *Chairman*
Lawrence V. Robertson Jr. - *Vice Chairman*
Dalton H. Cole Jr. - *Commissioner*
Drew John - *Commissioner*
John F. Sullivan - *Commissioner*

Staff

Ed Gerak - *Executive Director*
Heather J. Cole - *Executive Secretary*

August 26, 2019

The Honorable Douglas A. Ducey
Office of the Governor
1700 W. Washington St., Suite 800
Phoenix, AZ 85007-2883

Dear Governor:

Pursuant to A.R.S. § 35-113, please find one original and one copy of the Arizona Power Authority's Buddies reports covering information for fiscal year 2020.

Sincerely,

Ed Gerak
Executive Director

**ARIZONA POWER AUTHORITY
BUDGET REQUEST DATA
FISCAL YEARS 2019-2021**

TAB

1. Buddies Transmittal
2. AZIPS Transmittal
3. Five Year Strategic Plan
4. Admin Main Report
5. Agency Fund Individual
6. Agency Fund Summary All Funds
7. Fund 1113 and 9506 Justification
8. Operating Schedules
9. Org Chart June 2018
10. Program Budget Unit Individual Funds
11. Program Budget Unit Summary-All Funds
12. Program Cost Center Individual
13. Program Cost Center Summary
14. Revenue
15. Sources and Uses Report

State of Arizona Budget Request

State Agency
Power Authority

A.R.S. Citation: Title 30, Ch. 1

Governor DUCEY:

This and the accompanying budget schedules, statements and explanatory information constitute the operating budget request for this agency for Fiscal Year 2021.

To the best of my knowledge all statements and explanations contained in the estimates submitted are true and correct.

Agency Head: **Ed Gerak**

Title: **Executive Director**

Ed Gerak 8/19/2019

(signature)

Phone: **(602) 368-4265**

Prepared By: **Gary Kern**

Email Address: **gary@powerauthority.org**

Date Prepared: **Monday, August 19, 2019**

	FY 2020 Expd. Plan	FY 2021 Fund. Issue	FY 2021 Total Budget
Non-Appropriated Funds	23,098.0	0.0	23,098.0
Interest Income	80.0	0.0	80.0
Fund Deposits	19,881.0	0.0	19,881.0
APA - General Fund	3,137.0	0.0	3,137.0
Total Amount Planned:	23,098.0	0.0	23,098.0

2019 - 2021 ARIZONA MASTER LIST OF STATE GOVERNMENT PROGRAMS

FY2021: Work with and support the Authority's customers in providing new efficient and environmentally sound generation resources at reasonable prices.

Performance Measures	FY 2019	FY 2020	FY 2021
	Actual	Estimate	Estimate
Customers purchasing power from Arizona Power Authority	63	63	63

PAA 0.0 Agency Summary
POWER AUTHORITY
 Ed Gerak, Executive Director
 (602) 368-4265
 A.R.S. §§ 30-101 et seq.
 Plan Contact: Gary Kern, Financial Administrator
 (602) 368-4265

Mission:

To responsibly administrate the Hoover Power allocation to the State of Arizona. In fulfilling this responsibility, the Power Authority strives to be an active leader in managing electric resources in a safe and environmentally prudent manner, and to provide active representation on behalf of the State of Arizona at federal, state, and local forums on issues that impact the public power community as a whole and that specifically involve Arizona and the Authority's power resources.

Description:

The Arizona Power Authority (APA) manages Arizona's allocation of hydroelectric power from the Hoover Dam for the overall benefit of the State. The APA cooperates with federal, state, and non-governmental agencies to address regulatory, environmental, and other matters that impact electric power and water uses of the Colorado River. In addition, the APA serves as an information resource for its customers on topics that impact their electric resources and the utilization of these resources. The Authority may also pursue generation and/or transmission projects that are within the APA's legislative mandate and are in the best interest of the State.

◆ **Goal 1** To analyze cost of service studies and other factors affecting the cost of power from Hoover Dam, in an effort to keep future power costs to a minimum.

- Objective: 1** FY2019: Review expenditures, scheduled maintenance, additions, improvements and other cost of service factors affecting power generation costs at Hoover Dam. Investigate possible new electric power supply sources, including renewable energy resources, to strengthen Arizona's electric power resource pool.
- FY2020: Review expenditures, scheduled maintenance, additions, improvements and other cost of service factors affecting power generation costs at Hoover Dam. Investigate possible new electric power supply sources, including renewable energy resources, to strengthen Arizona's electric power resource pool.
- FY2021: Review expenditures, scheduled maintenance, additions, improvements and other cost of service factors affecting power generation costs at Hoover Dam. Investigate possible new electric power supply sources, including renewable energy resources, to strengthen Arizona's electric power resource pool.

Performance Measures	FY 2019 Actual	FY 2020 Estimate	FY 2021 Estimate
Hoover annual revenue requirements (In thousands).	69,742	66,419	84,551

◆ **Goal 2** To analyze and critically review the transmission system costs and other factors associated with the delivery of Hoover power.

- Objective: 1** FY2019: Review 2019 expenditures, scheduled maintenance, additions, improvements and other cost of service factors affecting the transmission of Hoover Dam Power.
- FY2020: Review 2020 expenditures, scheduled maintenance, additions, improvements and other cost of service factors affecting the transmission of Hoover Dam Power.
- FY2021: Review 2021 expenditures, scheduled maintenance, additions, improvements and other cost of service factors affecting the transmission of Hoover Dam Power.

◆ **Goal 3** To ensure the Power Authority has the opportunity to coordinate and cooperate with Federal agencies to supply and deliver Hoover power to the Authority's customers in the State of Arizona.

- Objective: 1** FY2019: Work with and support the Authority's customers by providing efficient and environmentally sound generation resources at reasonable prices.
- FY2020: Work with and support the Authority's customers in providing new efficient and environmentally sound generation resources at reasonable prices.

AGENCY SUMMARY

Program: PAA 0 . 0 POWER AUTHORITY
Director: Ed Gerak, Executive Director
Phone: (602) 368-4265
Statute: A.R.S. §§ 30-101 et seq.
Plan Contact: Gary Kern, Financial Administrator
(602) 368-4265

Mission:

To responsibly administrate the Hoover Power allocation to the State of Arizona. In fulfilling this responsibility, the Power Authority strives to be an active leader in managing electric resources in a safe and environmentally prudent manner, and to provide active representation on behalf of the State of Arizona at federal, state, and local forums on issues that impact the public power community as a whole and that specifically involve Arizona and the Authority's power resources.

Description:

The Arizona Power Authority (APA) manages Arizona's allocation of hydroelectric power from the Hoover Dam for the overall benefit of the State. The APA cooperates with federal, state, and non-governmental agencies to address regulatory, environmental, and other matters that impact electric power and water uses of the Colorado River. In addition, the APA serves as an information resource for its customers on topics that impact their electric resources and the utilization of these resources. The Authority may also pursue generation and/or transmission projects that are within the APA's legislative mandate and are in the best interest of the State.

◆ **Goal:** 1 To analyze cost of service studies and other factors affecting the cost of power from Hoover Dam, in an effort to keep future power costs to a minimum.

- Objectives:** 1 2019 Obj: Review expenditures, scheduled maintenance, additions, improvements and other cost of service factors affecting power generation costs at Hoover Dam. Investigate possible new electric power supply sources, including renewable energy resources, to strengthen Arizona's electric power resource pool.
2020 Obj: Review expenditures, scheduled maintenance, additions, improvements and other cost of service factors affecting power generation costs at Hoover Dam. Investigate possible new electric power supply sources, including renewable energy resources, to strengthen Arizona's electric power resource pool.
2021 Obj: Review expenditures, scheduled maintenance, additions, improvements and other cost of service factors affecting power generation costs at Hoover Dam. Investigate possible new electric power supply sources, including renewable energy resources, to strengthen Arizona's electric power resource pool.

Performance Measures:

ML	Budget	Type		FY 2018	FY 2019	FY 2019	FY 2020	FY 2021	
				Actual	Estimate	Actual	Estimate	Estimate	
1	<input checked="" type="checkbox"/>	<input type="checkbox"/>	IP	Hoover annual revenue requirements (in thousands).	76,910	73,971	69,742	66,419	84,551

◆ **Goal:** 2 To analyze and critically review the transmission system costs and other factors associated with the delivery of Hoover power.

- Objectives:** 1 2019 Obj: Review 2019 expenditures, scheduled maintenance, additions, improvements and other cost of service factors affecting the transmission of Hoover Dam Power.
2020 Obj: Review 2020 expenditures, scheduled maintenance, additions, improvements and other cost of service factors affecting the transmission of Hoover Dam Power.
2021 Obj: Review 2021 expenditures, scheduled maintenance, additions, improvements and other cost of service factors affecting the transmission of Hoover Dam Power.

◆ **Goal:** 3 To ensure the Power Authority has the opportunity to coordinate and cooperate with Federal agencies to supply and deliver Hoover power to the Authority's customers in the State of Arizona.

- Objectives:** 1 2019 Obj: Work with and support the Authority's customers by providing efficient and environmentally sound generation resources at reasonable prices.
2020 Obj: Work with and support the Authority's customers in providing new efficient and environmentally sound generation resources at reasonable prices.
2021 Obj: Work with and support the Authority's customers in providing new efficient and environmentally sound generation resources at reasonable prices.

Performance Measures:

ML	Budget	Type		FY 2018	FY 2019	FY 2019	FY 2020	FY 2021	
				Actual	Estimate	Actual	Estimate	Estimate	
1	<input checked="" type="checkbox"/>	<input type="checkbox"/>	IP	Customers purchasing power from Arizona Power Authority	63	63	63	63	63

Agency 5-Year Plan

Issue 1 Costs of generation and transmission resources

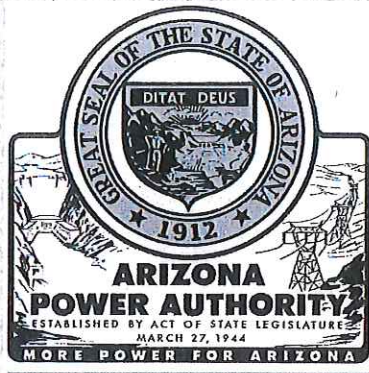
Description: Maintaining or reducing costs of generation and transmission resources.

Solutions:

To keep future power costs to a minimum, we will continue to analyze cost of service studies and other factors affecting the cost of power from Hoover Dam.

Resource Assumptions

	FY2022 Estimate	FY2023 Estimate	FY2024 Estimate
Full-Time Equivalent Positions	7.0	7.0	7.0
General Fund	0.0	0.0	0.0
Other Appropriated Funds	0.0	0.0	0.0
Non-Appropriated Funds	7.0	7.0	7.0
Federal Funds	0.0	0.0	0.0



ARIZONA POWER AUTHORITY



FIVE YEAR STRATEGIC PLAN FY2021-FY2025

Ed Gerak
Executive Director

TABLE OF CONTENTS

LETTER FROM EXECUTIVE DIRECTOR	2
DESCRIPTION OF BUSINESS	3
MISSION STATEMENT	4
STRATEGIC ISSUE #1	5
Fiscal Responsibility	
STRATEGIC ISSUE #2	5
Resource Focused	
STRATEGIC ISSUE #3	5
Customer Support	
GOALS & OBJECTIVES	6

Arizona Power Authority

1810 W. Adams St.
Phoenix, AZ 85007
(602) 368-4265
www.powerauthority.org



Commission

Russell L. Jones - *Chairman*
Lawrence V. Robertson Jr. - *Vice Chairman*
Dalton H. Cole Jr. - *Commissioner*
Drew John - *Commissioner*
John F. Sullivan - *Commissioner*

Staff

Ed Gerak - *Executive Director*
Heather J. Cole - *Executive Secretary*

August 19, 2019

I hereby present the Five Year Strategic Plan for the Arizona Power Authority.
This Strategic Plan covers Fiscal Years 2021 through 2025.

The Authority remains dedicated to its mission to deliver affordable, reliable clean electric power to its customers throughout Arizona from Hoover Dam. Given the rapid pace of change occurring in the power sector today, Arizona Power Authority is proud to help manage such a reliable, renewable, carbon-free, low-cost energy for our state. It is an important role that will help provide stability for years to come. With the doubling of our current customer base in 2017, the Authority is continuing with a customer service program that will help educate our new customers, encourage existing customers and enhance staff to be better resources in the future. As technology is reshaping the energy market, we will monitor this evolving landscape and make sure Arizona, the Authority and its customers are ready for what lies ahead. Given the potential for retirements of multiple customer representatives, the APA is developing training content for its customers.

Thank you,

A handwritten signature in blue ink that reads "Ed Gerak".

Ed Gerak
Executive Director

ARIZONA POWER AUTHORITY

DESCRIPTION OF BUSINESS

The Arizona Power Authority (the “Authority”) is a body, corporate and politic, without taxing power, established by the Arizona Legislature on May 27, 1944 by the Power Authority Act. Under the Power Authority Act, the Authority is directed to obtain electric power developed from the mainstream of the Colorado River and sell such power to certain qualified purchasers. The Power Authority Act provides that the Authority must be a self-supporting agency and prohibits the Authority from incurring any obligation, which would be binding upon the State of Arizona.

The Authority supplies capacity and energy on a wholesale basis to certain power purchasers in the State of Arizona. The Authority’s primary source of power and energy is the Hoover Power Plant at Hoover Dam, located approximately 25 miles from Las Vegas, Nevada. Hoover Dam was dedicated in 1935 and the first generator of the Hoover Power Plant was in full operation in October 1936 and has been in continuous operation since. Power and energy from the Hoover Power Plant is transmitted to load centers in Arizona, California and Nevada. The Authority first contracted for Arizona’s share of Hoover power in 1952 (approximately 20%) and has continuously provided power and energy to its customers since that time.

The Authority is governed by a commission of five members appointed by the Governor and approved by the State Senate (the “Commission”). The term of office for each member is six years and the members select a chairman and vice-chairman from among its membership for two-year terms.

Pursuant to Arizona law, the Commission serves as the Authority’s regulatory body with the exclusive authority to establish electric prices for the capacity and energy generated at Hoover Dam and sold in Arizona. The Authority is a public nonprofit body, operates as an exempt agency, and is required to follow Open Meeting Laws regarding public notice requirements and public meetings. It also has the authority to implement changes in electric price schedules, as needed.

ARIZONA POWER AUTHORITY MISSION

To responsibly administrate the Hoover Power allocation to the State of Arizona. In fulfilling this responsibility, the Power Authority strives to be an active leader in managing electric resources in a safe and environmentally prudent manner, and to provide active representation on behalf of the State of Arizona at federal, state, and local forums on issues that impact the public power community as a whole and issues that specifically involve Arizona and the Power Authority's power resources.

STRATEGIC ISSUES

STRATEGIC ISSUE #1: *Fiscal Responsibility*

Manage resources for APA customers at the lowest possible rates consistent with sound business principles. Review expenditures, scheduled maintenance, additions, improvements and other cost of service factors affecting power generation costs at Hoover Dam.

	FY2019 (actual)	FY2020 (estimate)	FY2021 (estimate)	FY2022 (estimate)	FY2023 (estimate)	FY2024 (estimate)	FY2025 (estimate)
Hoover Annual Revenue Requirements (in thousands)	69,742	66,419	84,551	75,983	89,889	85,941	91,689

STRATEGIC ISSUE #2: *Resource Focused*

The electrical power industry is going through radical changes today, coupled with the complexities of the Colorado River, and makes the APA a good resource for our customers. It is important that the APA understands the Water-Power-Agriculture nexus, works with fellow state agencies and NGOs in arenas vital to the betterment of Arizona, APA's customers and Public Power as a whole.

STRATEGIC ISSUE #3: *Customer Support*

As our customers face a wave of retirements and we continue to onboard new customers, the APA is developing training programs to assist in these transitions. It also is participating in the apparent shift towards a formalized market, seeking ways to maximize the value of Hoover capacity for its customers.

ARIZONA POWER AUTHORITY GOALS

2021 through 2025

GOAL #1: *To be a leader for Hoover, Arizona, the Colorado River and Public Power as a whole.*

OBJECTIVES: Be actively engaged in Hoover management, especially with Engineering and Operations Committee, Technical Review Committee and annual budgeting. Be a resource for all of our 63 customers. Develop and enhance relationships with state and federal legislators and federal staff.

GOAL #2: *Strive for Operational Excellence.*

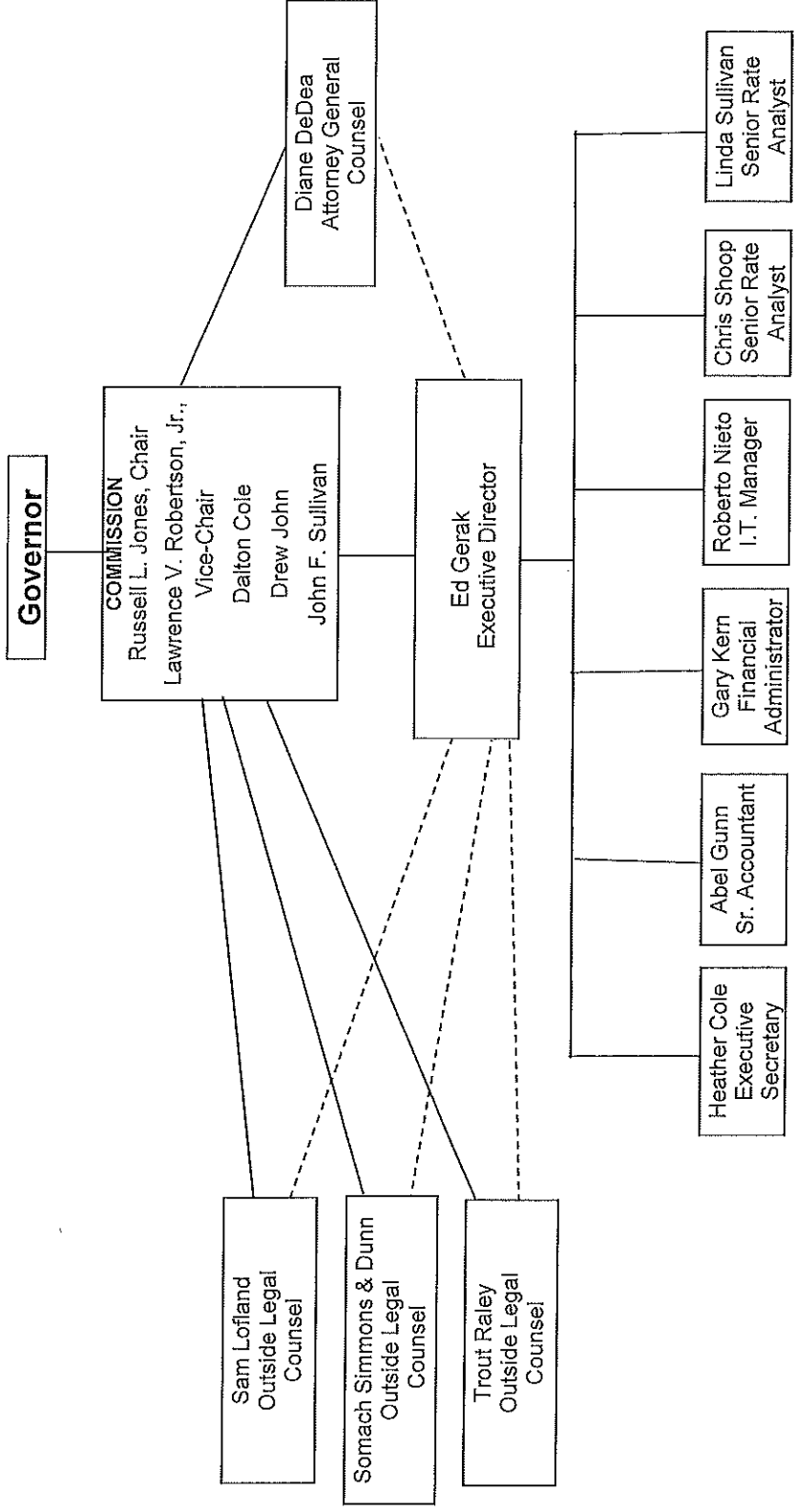
OBJECTIVES: Evaluate, educate, enhance and encourage our existing and potential staff. Establish proper staffing for expected workload, provide training for existing staff, and control or reduce costs.

GOAL #3: *To Create a Culture of Customer Service.*

OBJECTIVES: Continue to improve the relationships with our customers. Have regular meeting with them at the APA and at their place of business. Create a 3rd place environment at the APA for customers, with flex workspace, so customers can interact and engage with staff. Provide quarterly/monthly training for customers/staff and legislators.

NOTE: Hoover power contracts expired on 9/30/2017. The number of customers who will have contracts with APA for Hoover power after that date is 63.

Arizona Power Authority as of June, 2019



Administrative Costs

Agency: Power Authority

Administrative Costs Summary

Common Administrative Area	FY 2021
Personal Services	710.7
ERE	221.7
All Other	699.9
Administrative Costs Total:	1,632.3

Administrative Cost / Total Expenditure Ratio

	Request	Admin %
FY 2021	23,098.0	7.1%

Program Group Summary of Expenditures and Budget Request for Selected Funds

Agency: Power Authority
 Program: Arizona Power Authority

FY 2019 FY 2020 FY 2021 FY 2021
 Actual Expd. Plan Fund. Issue Total Request

Fund:	PA1112-N	Interest Income (Non-Appropriated)				
Program Expenditures						
COST CENTER/PROGRAM BUDGET UNIT						
1-1	Arizona Power Authority		80.0	0.0	0.0	80.0
Total			80.0	0.0	0.0	80.0

Non-Appropriated Funding						
Expenditure Categories						
	Personal Services	0.0	0.0	0.0	0.0	0.0
	Employee Related Expenses	0.0	0.0	0.0	0.0	0.0
	Professional and Outside Services	0.0	0.0	0.0	0.0	0.0
	Travel In-State	0.0	0.0	0.0	0.0	0.0
	Travel Out of State	0.0	0.0	0.0	0.0	0.0
	Food	0.0	0.0	0.0	0.0	0.0
	Aid to Organizations and Individuals	0.0	0.0	0.0	0.0	0.0
	Other Operating Expenses	105.6	80.0	0.0	0.0	80.0
	Equipment	0.0	0.0	0.0	0.0	0.0
	Capital Outlay	0.0	0.0	0.0	0.0	0.0
	Debt Service	0.0	0.0	0.0	0.0	0.0
	Cost Allocation	0.0	0.0	0.0	0.0	0.0
	Transfers	0.0	0.0	0.0	0.0	0.0
Expenditure Categories Total:			80.0	0.0	0.0	80.0

Fund PA1112-N Total:						
		105.6	80.0	0.0	0.0	80.0
Program 1 Total:			80.0	0.0	0.0	80.0

Program Group Summary of Expenditures and Budget Request for Selected Funds

Agency: Power Authority
 Program: Arizona Power Authority

FY 2019 Actual FY 2020 Expd. Plan FY 2021 Fund. Issue FY 2021 Total Request

Fund:	PA1113-N	Fund Deposits (Non-Appropriated)				
Program Expenditures						
COST CENTER/PROGRAM BUDGET UNIT						
1-1	Arizona Power Authority	20,796.3	19,881.0	0.0	0.0	19,881.0
Total		20,796.3	19,881.0	0.0	0.0	19,881.0
Non-Appropriated Funding						
Expenditure Categories						
	FTE Positions	7.0	7.0	0.0	0.0	7.0
	Personal Services	687.4	710.7	0.0	0.0	710.7
	Employee Related Expenses	207.7	221.7	0.0	0.0	221.7
	Professional and Outside Services	390.4	453.8	0.0	0.0	453.8
	Travel In-State	18.6	21.0	0.0	0.0	21.0
	Travel Out of State	39.2	39.5	0.0	0.0	39.5
	Food	0.0	0.0	0.0	0.0	0.0
	Aid to Organizations and Individuals	0.0	0.0	0.0	0.0	0.0
	Other Operating Expenses	17,698.5	16,660.2	0.0	0.0	16,660.2
	Equipment	23.2	39.8	0.0	0.0	39.8
	Capital Outlay	0.0	0.0	0.0	0.0	0.0
	Debt Service	1,731.3	1,734.3	0.0	0.0	1,734.3
	Cost Allocation	0.0	0.0	0.0	0.0	0.0
	Transfers	0.0	0.0	0.0	0.0	0.0
Expenditure Categories Total:		20,796.3	19,881.0	0.0	0.0	19,881.0
Fund PA1113-N Total:		20,796.3	19,881.0	0.0	0.0	19,881.0
Program 1 Total:		20,796.3	19,881.0	0.0	0.0	19,881.0

Program Group Summary of Expenditures and Budget Request for Selected Funds

Agency: Power Authority
 Program: Arizona Power Authority

FY 2019 FY 2020 FY 2021 FY 2021
 Actual Expd. Plan Fund. Issue Total Request

Fund:	PA1114-N APA - General Fund (Non-Appropriated)				
Program Expenditures					
COST CENTER/PROGRAM BUDGET UNIT					
1-1	Arizona Power Authority	1,179.1	3,137.0	0.0	3,137.0
Total		1,179.1	3,137.0	0.0	3,137.0

Non-Appropriated Funding
 Expenditure Categories

Personal Services	0.0	0.0	0.0	0.0
Employee Related Expenses	0.0	0.0	0.0	0.0
Professional and Outside Services	0.0	0.0	0.0	0.0
Travel In-State	0.0	0.0	0.0	0.0
Travel Out of State	0.0	0.0	0.0	0.0
Food	0.0	0.0	0.0	0.0
Aid to Organizations and Individuals	0.0	0.0	0.0	0.0
Other Operating Expenses	1,179.1	3,086.6	0.0	3,086.6
Equipment	0.0	0.0	0.0	0.0
Capital Outlay	0.0	50.4	0.0	50.4
Debt Service	0.0	0.0	0.0	0.0
Cost Allocation	0.0	0.0	0.0	0.0
Transfers	0.0	0.0	0.0	0.0

Expenditure Categories Total:	1,179.1	3,137.0	0.0	3,137.0
Fund PA1114-N Total:	1,179.1	3,137.0	0.0	3,137.0
Program 1 Total:	1,179.1	3,137.0	0.0	3,137.0

Summary of Expenditure and Budget Request for Selected Funds

Agency: Power Authority

Fund: PA1114 APA - General Fund (Non-Appropriated)

	FY 2019 Actual	FY 2020 Expd. Plan	FY 2021 Fund. Issue	FY 2021 Total Request
Agency Total for Selected Funds	22,081.0	23,098.0	0.0	23,098.0

Summary of Expenditure and Budget Request for All Funds

Agency: Power Authority

Non-Appropriated

Cost Center/Program:	FY 2019	FY 2020	FY 2021	FY 2021	FY 2021
	Actual	Expd. Plan	Fund. Issue	Total Request	Total Request
1 Arizona Power Authority	22,081.0	23,098.0	0.0	23,098.0	23,098.0
	22,081.0	23,098.0	0.0	23,098.0	23,098.0
Expenditure Categories					
FTE	7.0	7.0	0.0	7.0	7.0
Personal Services	687.4	710.7	0.0	710.7	710.7
Employee Related Expenses	207.7	221.7	0.0	221.7	221.7
Professional and Outside Services	390.4	453.8	0.0	453.8	453.8
Travel In-State	18.6	21.0	0.0	21.0	21.0
Travel Out of State	39.2	39.5	0.0	39.5	39.5
Food	0.0	0.0	0.0	0.0	0.0
Aid to Organizations and Individuals	0.0	0.0	0.0	0.0	0.0
Other Operating Expenses	18,983.2	19,826.8	0.0	19,826.8	19,826.8
Equipment	23.2	39.8	0.0	39.8	39.8
Capital Outlay	0.0	50.4	0.0	50.4	50.4
Debt Service	1,731.3	1,734.3	0.0	1,734.3	1,734.3
Cost Allocation	0.0	0.0	0.0	0.0	0.0
Transfers	0.0	0.0	0.0	0.0	0.0
Expenditure Categories Total:	22,081.0	23,098.0	0.0	23,098.0	23,098.0

Summary of Expenditure and Budget Request for All Funds

Agency: Power Authority

Agency Total for All Funds:

22,081.0 23,098.0 0.0 23,098.0

Arizona Power Authority

Fund 1113 Justification:

Future revenue which will be deposited into the Fund Deposit Fund (Power Authority) are primarily based upon Western Area Power Administration's projection of energy and capacity from Hoover Dam, debt service, and administration costs.

Fund 1114 Justification:

The primary component is supplemental requested by our customers and is treated as a pass through. Revenues which are deposited in the APA - General Fund are estimated from the anticipated customer needs for the coming year.

Program Expenditure Schedule

Agency:	Power Authority	
Program:	Arizona Power Authority	
	FY 2019 Actual	FY 2020 Expd. Plan
FTE	7.0	7.0
Expenditure Category Total	7.0	7.0
Non-Appropriated		
PA1113-N Fund Deposits (Non-Appropriated)	7.0	7.0
Fund Source Total	7.0	7.0
<hr/>		
Personal Services	684.1	706.9
Boards and Commissions	3.3	3.8
Expenditure Category Total	687.4	710.7
Non-Appropriated		
PA1113-N Fund Deposits (Non-Appropriated)	687.4	710.7
Fund Source Total	687.4	710.7
<hr/>		
Employee Related Expenses	207.7	221.7
Expenditure Category Total	207.7	221.7
Non-Appropriated		
PA1113-N Fund Deposits (Non-Appropriated)	207.7	221.7
Fund Source Total	207.7	221.7
<hr/>		
Professional and Outside Services		453.8
External Prof/Outside Serv Budg And Appn	0.0	
External Investment Services	31.4	
Other External Financial Services	44.1	
Attorney General Legal Services	55.7	
External Legal Services	1.2	
External Engineer/Architect Cost - Exp	0.0	
External Engineer/Architect Cost- Cap	0.0	
Other Design	0.0	
Temporary Agency Services	0.0	
Hospital Services	0.0	
Other Medical Services	0.0	
Institutional Care	0.0	
Education And Training	14.8	
Vendor Travel	0.0	
Professional & Outside Services Excluded from Cost Alloca	0.0	
Vendor Travel - Non Reportable	0.0	
External Telecom Consulting Services	0.0	
Costs related to those in custody of the State	0.0	
Non - Confidential Specialist Fees	0.0	
Confidential Specialist Fees	0.0	
Outside Actuarial Costs	0.0	
Other Professional And Outside Services	243.2	

Program Expenditure Schedule

Agency:	Power Authority
Program:	Arizona Power Authority

	FY 2019 Actual	FY 2020 Expd. Plan
Expenditure Category Total	390.4	453.8
Non-Appropriated		
PA1113-N Fund Deposits (Non-Appropriated)	390.4	453.8
Fund Source Total	390.4	453.8
<hr/>		
Travel In-State	18.6	21.0
Expenditure Category Total	18.6	21.0
Non-Appropriated		
PA1113-N Fund Deposits (Non-Appropriated)	18.6	21.0
Fund Source Total	18.6	21.0
<hr/>		
Travel Out of State	39.2	39.5
Expenditure Category Total	39.2	39.5
Non-Appropriated		
PA1113-N Fund Deposits (Non-Appropriated)	39.2	39.5
Fund Source Total	39.2	39.5
<hr/>		
Food	0.0	0.0
Expenditure Category Total	0.0	0.0
<hr/>		
Aid to Organizations and Individuals	0.0	0.0
Expenditure Category Total	0.0	0.0
<hr/>		
Other Operating Expenses		19,826.8
Other Operating Expenditures Budg Approp	0.0	
Other Operating Expenditures Excluded from Cost Allocati	0.0	
Risk Management Charges To State Agency	27.1	
Risk Management Deductible - Indemnity	0.0	
Risk Management Deductible - Legal	0.0	
Risk Management Deductible - Medical	0.0	
Risk Management Deductible - Other	0.0	
Gen Liab- Non Physical-Taxable- Self Ins	0.0	
Gross Proceeds Payments To Attorneys	0.0	
General Liability- Non-Taxable- Self Ins	0.0	
Medical Malpractice - Self-Insured	0.0	
Automobile Liability - Self Insured	0.0	
General Property Damage - Self- Insured	0.0	
Automobile Physical Damage-Self Insured	0.0	
Liability Insurance Premiums	0.0	
Property Insurance Premiums	0.0	
Workers Compensation Benefit Payments	0.0	
Self Insurance - Administrative Fees	0.0	
Self Insurance - Premiums	0.0	
Self Insurance - Claim Payments	0.0	
Self Insurance - Pharmacy Claims	0.0	
Premium Tax On Altcs	0.0	

Program Expenditure Schedule

Agency: Power Authority

Program: Arizona Power Authority

	FY 2019 Actual	FY 2020 Expd. Plan
Other Insurance-Related Charges	0.0	
Internal Service Data Processing	0.0	
Internal Service Data Proc- Pc/Lan	0.0	
External Programming-Mainframe/Legacy	0.0	
External Programming- Pc/Lan/Serv/Web	0.0	
External Data Entry	0.0	
Othr External Data Proc-Mainframe/Legacy	0.0	
Othr External Data Proc-Pc/Lan/Serv/Web	0.0	
Pmt for AFIS Development & Usage	0.0	
Internal Service Telecommunications	0.0	
External Telecom Long Distance-In-State	0.0	
External Telecom Long Distance-Out-State	0.0	
Other External Telecommunication Service	12.5	
Electricity	18.5	
Sanitation Waste Disposal	1.1	
Water	0.0	
Gas And Fuel Oil For Buildings	0.0	
Other Utilities	0.0	
Building Rent Charges To State Agencies	0.0	
Priv Lease To Own Bld Rent Chrgs To Agy	0.0	
Cert Of Part Bld Rent Chrgs To Agy	0.0	
Rental Of Land And Buildings	0.0	
Rental Of Computer Equipment	0.0	
Rental Of Other Machinery And Equipment	0.0	
Miscellaneous Rent	0.0	
Interest On Overdue Payments	0.0	
All Other Interest Payments	0.0	
Internal Acct/Budg/Financial Svcs	0.0	
Other Internal Services	0.0	
Repair And Maintenance - Buildings	50.5	
Repair And Maintenance - Vehicles	0.0	
Repair And Maint - Mainframe And Legacy	0.0	
Repair And Maint-Pc/Lan/Serv/Web	0.0	
Repair And Maintenance - Other Equipment	0.0	
Other Repair And Maintenance	0.0	
Software Support And Maintenance	0.0	
Uniforms	0.0	
Inmate Clothing	0.0	
Security Supplies	0.0	
Office Supplies	5.2	
Computer Supplies	0.0	
Housekeeping Supplies	0.0	
Bedding And Bath Supplies	0.0	
Drugs And Medicine Supplies	0.0	
Medical Supplies	0.0	
Dental Supplies	0.0	
Automotive And Transportation Fuels	0.0	
Automotive Lubricants And Supplies	0.0	
Rpr And Maint Supplies-Not Auto Or Build	0.0	
Repair And Maintenance Supplies-Building	0.0	
Other Operating Supplies	0.0	

Program Expenditure Schedule

Agency: Power Authority

Program: Arizona Power Authority

	FY 2019 Actual	FY 2020 Expd. Plan
Publications	0.0	
Aggregate Withheld Or Paid Commissions	0.0	
Lottery Prizes	0.0	
Lottery Distribution Costs	0.0	
Material for Further Processing	0.0	
Other Resale Supplies	18,368.6	
Loss On Sales Of Capital Assets	0.0	
Loss on Sales of Investments	0.0	
Employee Tuition Reimbursement-Graduate	0.0	
Employee Tuition Reimb Under-Grad/Other	0.0	
Conference Registration-Attendance Fees	32.9	
Other Education And Training Costs	0.0	
Advertising	0.0	
Sponsorships	0.0	
Internal Printing	0.3	
External Printing	0.0	
Photography	0.0	
Postage And Delivery	0.6	
Document shredding and Destruction Services	0.0	
Translation and Sign Language Services	0.0	
Distribution To State Universities	0.0	
Other Intrastate Distributions	0.0	
Awards	0.0	
Entertainment And Promotional Items	0.0	
Dues	0.0	
Books- Subscriptions And Publications	0.0	
Costs For Digital Image Or Microfilm	0.0	
Revolving Fund Advances	0.0	
Credit Card Fees Over Approved Limit	0.0	
Relief Bill Expenditures	0.0	
Surplus Property Distr To State Agencies	0.0	
Security Services	0.0	
Judgments - Damages	0.0	
ICA Payments to Claimants Confidential	0.0	
Jdgmnt-Confidential Restitution To Indiv	0.0	
Judgments - Non-Confidential Restitution	0.0	
Judgments - Punitive And Compensatory	0.0	
Pmts Made to Resolve/Disputes/Avoid Costs of Litigation	0.0	
Pmts For Contracted State Inmate Labor	0.0	
Payments To State Inmates	0.0	
Bad Debt Expense	0.0	
Interview Expense	0.0	
Employee Relocations-Nontaxable	0.0	
Employee Relocations-Taxable	0.0	
Non-Confidential Invest/Legal/Law Enf	0.0	
Conf/Sensitive Invest/Legal/Undercover	0.0	
Fingerprinting, Background Checks, Etc.	0.0	
Other Miscellaneous Operating	465.9	

Program Expenditure Schedule

Agency: Power Authority

Program: Arizona Power Authority

	FY 2019 Actual	FY 2020 Expd. Plan
Expenditure Category Total	18,983.2	19,826.8
Non-Appropriated		
PA1112-N Interest Income (Non-Appropriated)	105.6	80.0
PA1113-N Fund Deposits (Non-Appropriated)	17,698.5	16,660.2
PA1114-N APA - General Fund (Non-Appropriated)	1,179.1	3,086.6
	<u>18,983.2</u>	<u>19,826.8</u>
Fund Source Total	18,983.2	19,826.8

Current Year Expenditures		39.8
Capital Equipment Budget And Approp	0.0	
Vehicles Capital Purchase	0.0	
Vehicles Capital Leases	0.0	
Furniture Capital Purchase	0.0	
Depreciable Works Of Art & Hist Treas/Coll Capital Purcha	0.0	
Non Depr Works Of Art & Hist Treas/Coll Cap Purchase	0.0	
Furniture Capital Leases	0.0	
Computer Equipment Capital Purchase	0.0	
Computer Equipment Capital Lease	0.0	
Telecommunication Equip-Capital Purchase	0.0	
Telecommunication Equip-Capital Lease	0.0	
Other Equipment Capital Purchase	0.0	
Other Equipment Capital Leases	0.0	
Purchased Or Licensed Software-Website	0.0	
Internally Generated Software-Website	0.0	
Development in Progress	0.0	
Right-Of-Way/Easement/Extraction Rights	0.0	
Oth Int Assets purchased, licensed or internally generate	0.0	
Other intangible assets acquired by capital lease	0.0	
Other Capital Asset Purchases	0.0	
Leasehold Improvement-Capital Purchase	0.0	
Other Capital Asset Leases	0.0	
Non-Capital Equip Budget And Approp	0.0	
Vehicles Non-Capital Purchase	0.0	
Vehicles Non-Capital Leases	0.0	
Furniture Non-Capital Purchase	0.0	
Works Of Art And Hist Treas-Non Capital	0.0	
Furniture Non-Capital Leases	0.0	
Computer Equipment Non-Capital Purchase	0.0	
Computer Equipment Non-Capital Lease	17.4	
Telecomm Equip Non-Capital Purchase	0.0	
Telecomm Equip Non-Capital Leases	0.0	
Other Equipment Non-Capital Purchase	0.0	
Weapons Non-Capital Purchase	0.0	
Other Equipment Non-Capital Lease	0.0	
Purchased Or Licensed Software/Website	5.8	
Internally Generated Software/Website	0.0	
LICENSES AND PERMITS	0.0	
Right-Of-Way/Easement/Extraction Exp	0.0	
Other Intangible Assets - Purchased, Licensed or Internall	0.0	
Noncapital Software/Web By Capital Lease	0.0	
Other Intangible Assets Acquired by Capital Lease	0.0	

Program Expenditure Schedule

Agency:	Power Authority
Program:	Arizona Power Authority

	FY 2019 Actual	FY 2020 Expd. Plan
Other Long Lived Tangible Assets to be Expenses	0.0	
Non-Capital Equipment Excluded from Cost Allocation	0.0	
Expenditure Category Total	23.2	39.8
Non-Appropriated		
PA1112-N Interest Income (Non-Appropriated)	0.0	0.0
PA1113-N Fund Deposits (Non-Appropriated)	23.2	39.8
	23.2	39.8
Fund Source Total	23.2	39.8
<hr/>		
Capital Outlay	0.0	50.4
Expenditure Category Total	0.0	50.4
Non-Appropriated		
PA1114-N APA - General Fund (Non-Appropriated)	0.0	50.4
	0.0	50.4
Fund Source Total	0.0	50.4
<hr/>		
Debt Service	1,731.3	1,734.3
Expenditure Category Total	1,731.3	1,734.3
Non-Appropriated		
PA1113-N Fund Deposits (Non-Appropriated)	1,731.3	1,734.3
	1,731.3	1,734.3
Fund Source Total	1,731.3	1,734.3
<hr/>		
Cost Allocation	0.0	0.0
Expenditure Category Total	0.0	0.0
<hr/>		
Transfers	0.0	0.0
Expenditure Category Total	0.0	0.0

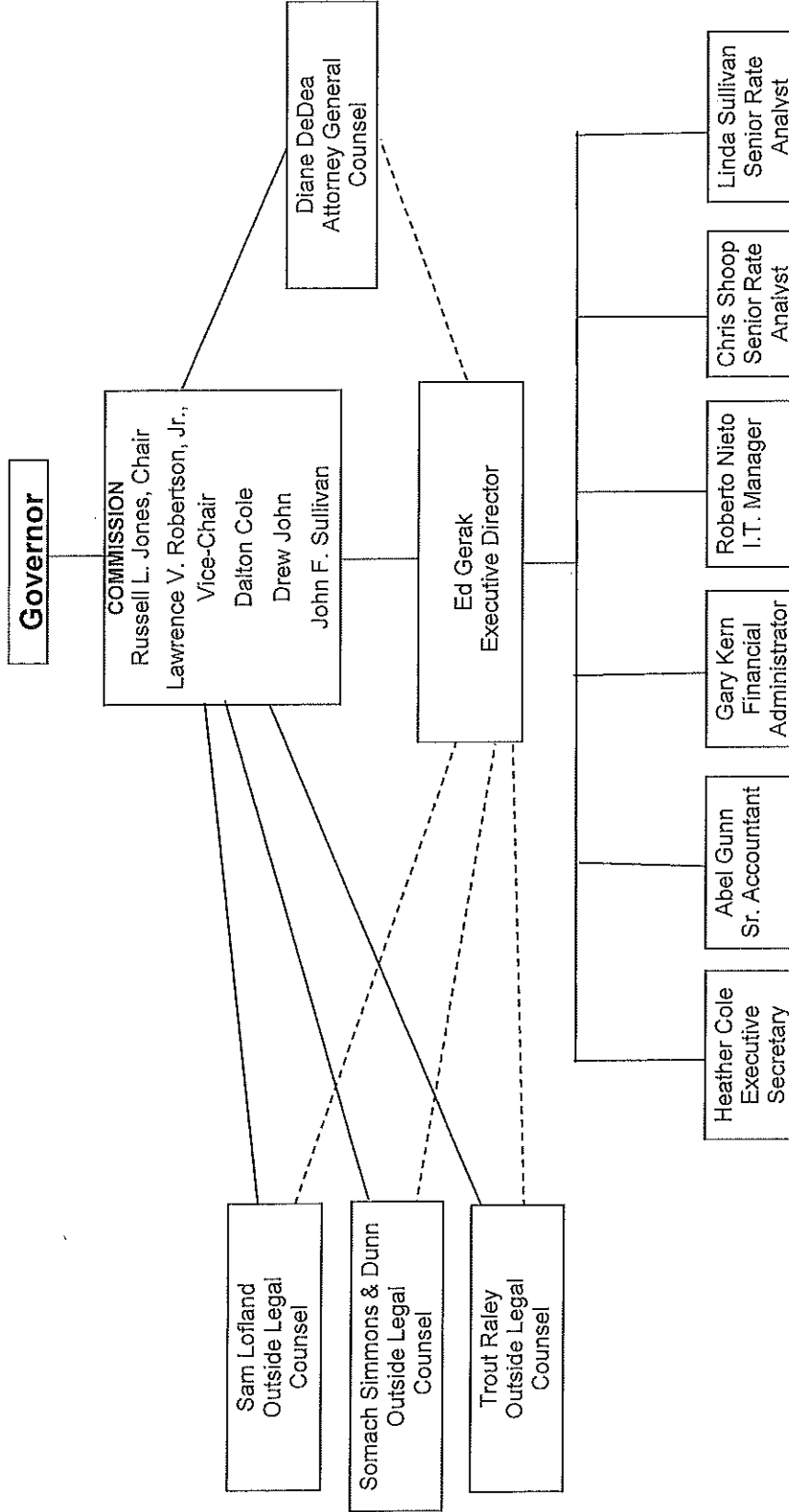
Employee Retirement Coverage

Retirement System	FTE	Personal Services	Fund#
Arizona State Retirement System	7.0	706.9	PA1113-N

Combined Regular & Elected Positions At/Above FICA Maximum of \$127,200

Total FTE	Personal Services	FTE's not eligible for Health, Dental & Life
1.0	164.4	0.0

Arizona Power Authority as of June, 2019



Program Budget Unit Summary of Expenditures and Budget Request for Selected Funds

Agency: Power Authority

	FY 2019	FY 2020	FY 2021	FY 2021	FY 2021
	Actual	Expd. Plan	Fund. Issue	Total Request	Total Request

Program: Arizona Power Authority

Fund: PA1112-N Interest Income

Non-Appropriated

6000 Personal Services	0.0	0.0	0.0	0.0	0.0
6100 Employee Related Expenses	0.0	0.0	0.0	0.0	0.0
6200 Professional and Outside Services	0.0	0.0	0.0	0.0	0.0
6500 Travel In-State	0.0	0.0	0.0	0.0	0.0
6600 Travel Out of State	0.0	0.0	0.0	0.0	0.0
6700 Food	0.0	0.0	0.0	0.0	0.0
6800 Aid to Organizations and Individuals	0.0	0.0	0.0	0.0	0.0
7000 Other Operating Expenses	105.6	80.0	0.0	80.0	80.0
8000 Equipment	0.0	0.0	0.0	0.0	0.0
8100 Capital Outlay	0.0	0.0	0.0	0.0	0.0
8600 Debt Service	0.0	0.0	0.0	0.0	0.0
9000 Cost Allocation	0.0	0.0	0.0	0.0	0.0
9100 Transfers	0.0	0.0	0.0	0.0	0.0
Non-Appropriated Total:	105.6	80.0	0.0	0.0	80.0
Fund Total:	105.6	80.0	0.0	0.0	80.0
Program Total For Selected Funds:	105.6	80.0	0.0	0.0	80.0

Program Budget Unit Summary of Expenditures and Budget Request for Selected Funds

Agency:	Power Authority					
Program:	Arizona Power Authority					
Fund:	PA1113-N Fund Deposits					
Non-Appropriated						
	FY 2019 Actual	FY 2020 Expd. Plan	FY 2021 Fund. Issue	FY 2021 Total Request		
0000 FTE	7.0	7.0	0.0	7.0		
6000 Personal Services	687.4	710.7	0.0	710.7		
6100 Employee Related Expenses	207.7	221.7	0.0	221.7		
6200 Professional and Outside Services	390.4	453.8	0.0	453.8		
6500 Travel In-State	18.6	21.0	0.0	21.0		
6600 Travel Out of State	39.2	39.5	0.0	39.5		
6700 Food	0.0	0.0	0.0	0.0		
6800 Aid to Organizations and Individuals	0.0	0.0	0.0	0.0		
7000 Other Operating Expenses	17,698.5	16,660.2	0.0	16,660.2		
8000 Equipment	23.2	39.8	0.0	39.8		
8100 Capital Outlay	0.0	0.0	0.0	0.0		
8600 Debt Service	1,731.3	1,734.3	0.0	1,734.3		
9000 Cost Allocation	0.0	0.0	0.0	0.0		
9100 Transfers	0.0	0.0	0.0	0.0		
Non-Appropriated Total:	20,796.3	19,881.0	0.0	19,881.0		
Fund Total:	20,796.3	19,881.0	0.0	19,881.0		
Program Total For Selected Funds:	20,796.3	19,881.0	0.0	19,881.0		

Program Budget Unit Summary of Expenditures and Budget Request for Selected Funds

Agency: Power Authority

	FY 2019	FY 2020	FY 2021	FY 2021	FY 2021
	Actual	Expd. Plan	Fund. Issue	Total Request	Total Request

Program: Arizona Power Authority

Fund: PA1114-N APA - General Fund

Non-Appropriated

6000	Personal Services	0.0	0.0	0.0	0.0
6100	Employee Related Expenses	0.0	0.0	0.0	0.0
6200	Professional and Outside Services	0.0	0.0	0.0	0.0
6500	Travel In-State	0.0	0.0	0.0	0.0
6600	Travel Out of State	0.0	0.0	0.0	0.0
6700	Food	0.0	0.0	0.0	0.0
6800	Aid to Organizations and Individuals	0.0	0.0	0.0	0.0
7000	Other Operating Expenses	1,179.1	3,086.6	0.0	3,086.6
8000	Equipment	0.0	0.0	0.0	0.0
8100	Capital Outlay	0.0	50.4	0.0	50.4
8600	Debt Service	0.0	0.0	0.0	0.0
9000	Cost Allocation	0.0	0.0	0.0	0.0
9100	Transfers	0.0	0.0	0.0	0.0
Non-Appropriated Total:		1,179.1	3,137.0	0.0	3,137.0
Fund Total:		1,179.1	3,137.0	0.0	3,137.0
Program Total For Selected Funds:		1,179.1	3,137.0	0.0	3,137.0

Program Budget Unit Summary of Expenditures and Budget Request for All Funds

Agency: Power Authority
 Program: Arizona Power Authority

Expenditure Categories	FY 2019	FY 2020	FY 2021	FY 2021
	Actual	Expd. Plan	Fund. Issue	Total Request
0000 FTE	7.0	7.0	0.0	7.0
6000 Personal Services	687.4	710.7	0.0	710.7
6100 Employee Related Expenses	207.7	221.7	0.0	221.7
6200 Professional and Outside Services	390.4	453.8	0.0	453.8
6500 Travel In-State	18.6	21.0	0.0	21.0
6600 Travel Out of State	39.2	39.5	0.0	39.5
6700 Food	0.0	0.0	0.0	0.0
6800 Aid to Organizations and Individuals	0.0	0.0	0.0	0.0
7000 Other Operating Expenses	18,983.2	19,826.8	0.0	19,826.8
8000 Equipment	23.2	39.8	0.0	39.8
8100 Capital Outlay	0.0	50.4	0.0	50.4
8600 Debt Service	1,731.3	1,734.3	0.0	1,734.3
9000 Cost Allocation	0.0	0.0	0.0	0.0
9100 Transfers	0.0	0.0	0.0	0.0
Expenditure Categories Total:	22,081.0	23,098.0	0.0	23,098.0
Fund Source				
Non-Appropriated Funds				
PA1112-N Interest Income (Non-Appropriated)	105.6	80.0	0.0	80.0
PA1113-N Fund Deposits (Non-Appropriated)	20,796.3	19,881.0	0.0	19,881.0
PA1114-N APA - General Fund (Non-Appropriated)	1,179.1	3,137.0	0.0	3,137.0
Fund Source Total:	22,081.0	23,098.0	0.0	23,098.0

Program Group Summary of Expenditures and Budget Request for Selected Funds

Agency: Power Authority
 Program: Arizona Power Authority

	FY 2019 Actual	FY 2020 Expd. Plan	FY 2021 Fund. Issue	FY 2021 Total Request
--	-------------------	-----------------------	------------------------	--------------------------

Fund: PA1112-N Interest Income (Non-Appropriated)

Program Expenditures

COST CENTER/PROGRAM BUDGET UNIT

1-1 Arizona Power Authority	105.6	80.0	0.0	80.0
Total	105.6	80.0	0.0	80.0

Non-Appropriated Funding

Expenditure Categories

Personal Services	0.0	0.0	0.0	0.0
Employee Related Expenses	0.0	0.0	0.0	0.0
Professional and Outside Services	0.0	0.0	0.0	0.0
Travel In-State	0.0	0.0	0.0	0.0
Travel Out of State	0.0	0.0	0.0	0.0
Food	0.0	0.0	0.0	0.0
Aid to Organizations and Individuals	0.0	0.0	0.0	0.0
Other Operating Expenses	105.6	80.0	0.0	80.0
Equipment	0.0	0.0	0.0	0.0
Capital Outlay	0.0	0.0	0.0	0.0
Debt Service	0.0	0.0	0.0	0.0
Cost Allocation	0.0	0.0	0.0	0.0
Transfers	0.0	0.0	0.0	0.0
Expenditure Categories Total:	105.6	80.0	0.0	80.0

Fund PA1112-N Total:

	105.6	80.0	0.0	80.0
Fund PA1112-N Total:	105.6	80.0	0.0	80.0

Program Group Summary of Expenditures and Budget Request for Selected Funds

Agency: Power Authority
 Program: Arizona Power Authority

	FY 2019 Actual	FY 2020 Expd. Plan	FY 2021 Fund. Issue	FY 2021 Total Request
--	-------------------	-----------------------	------------------------	--------------------------

Fund: PA1113-N Fund Deposits (Non-Appropriated)

Program Expenditures

COST CENTER/PROGRAM BUDGET UNIT

1-1 Arizona Power Authority	20,796.3	19,881.0	0.0	19,881.0
Total	20,796.3	19,881.0	0.0	19,881.0

Non-Appropriated Funding

Expenditure Categories

FTE Positions	7.0	7.0	0.0	7.0
Personal Services	687.4	710.7	0.0	710.7
Employee Related Expenses	207.7	221.7	0.0	221.7
Professional and Outside Services	390.4	453.8	0.0	453.8
Travel In-State	18.6	21.0	0.0	21.0
Travel Out of State	39.2	39.5	0.0	39.5
Food	0.0	0.0	0.0	0.0
Aid to Organizations and Individuals	0.0	0.0	0.0	0.0
Other Operating Expenses	17,698.5	16,660.2	0.0	16,660.2
Equipment	23.2	39.8	0.0	39.8
Capital Outlay	0.0	0.0	0.0	0.0
Debt Service	1,731.3	1,734.3	0.0	1,734.3
Cost Allocation	0.0	0.0	0.0	0.0
Transfers	0.0	0.0	0.0	0.0
Expenditure Categories Total:	20,796.3	19,881.0	0.0	19,881.0

Fund PA1113-N Total: 20,796.3 19,881.0 0.0 19,881.0

Program Group Summary of Expenditures and Budget Request for Selected Funds

Agency: Power Authority
 Program: Arizona Power Authority

	FY 2019 Actual	FY 2020 Expd. Plan	FY 2021 Fund. Issue	FY 2021 Total Request
--	-------------------	-----------------------	------------------------	--------------------------

Fund: PA1114-N APA - General Fund (Non-Appropriated)				
Program Expenditures				
COST CENTER/PROGRAM BUDGET UNIT				
1-1 Arizona Power Authority	1,179.1	3,137.0	0.0	3,137.0
Total	1,179.1	3,137.0	0.0	3,137.0

Non-Appropriated Funding				
Expenditure Categories				
Personal Services	0.0	0.0	0.0	0.0
Employee Related Expenses	0.0	0.0	0.0	0.0
Professional and Outside Services	0.0	0.0	0.0	0.0
Travel In-State	0.0	0.0	0.0	0.0
Travel Out of State	0.0	0.0	0.0	0.0
Food	0.0	0.0	0.0	0.0
Aid to Organizations and Individuals	0.0	0.0	0.0	0.0
Other Operating Expenses	1,179.1	3,086.6	0.0	3,086.6
Equipment	0.0	0.0	0.0	0.0
Capital Outlay	0.0	50.4	0.0	50.4
Debt Service	0.0	0.0	0.0	0.0
Cost Allocation	0.0	0.0	0.0	0.0
Transfers	0.0	0.0	0.0	0.0
Expenditure Categories Total:	1,179.1	3,137.0	0.0	3,137.0

Fund PA1114-N Total:	1,179.1	3,137.0	0.0	3,137.0
Program 1 Total:	22,081.0	23,098.0	0.0	23,098.0

Program Summary of Expenditures and Budget Request

Agency: Power Authority
 Program: Arizona Power Authority

	FY 2019 Actual	FY 2020 Expd. Plan	FY 2021 Fund. Issue	FY 2021 Total Request
--	-------------------	-----------------------	------------------------	--------------------------

Program Summary				
1-1	Arizona Power Authority	23,098.0	0.0	23,098.0
Program Summary Total:		22,081.0	23,098.0	23,098.0

Expenditure Categories				
0000	FTE Positions	7.0	0.0	7.0
6000	Personal Services	687.4	0.0	710.7
6100	Employee Related Expenses	207.7	0.0	221.7
6200	Professional and Outside Services	390.4	0.0	453.8
6500	Travel In-State	18.6	0.0	21.0
6600	Travel Out of State	39.2	0.0	39.5
6700	Food	0.0	0.0	0.0
6800	Aid to Organizations and Individuals	0.0	0.0	0.0
7000	Other Operating Expenses	18,983.2	0.0	19,826.8
8000	Equipment	23.2	0.0	39.8
8100	Capital Outlay	0.0	0.0	50.4
8600	Debt Service	1,731.3	0.0	1,734.3
9000	Cost Allocation	0.0	0.0	0.0
9100	Transfers	0.0	0.0	0.0
Expenditure Categories Total:		22,081.0	23,098.0	23,098.0

Fund Source				
Non-Appropriated Funds				
PA1112-N	Interest Income (Non-Appropriated)	105.6	0.0	80.0
PA1113-N	Fund Deposits (Non-Appropriated)	20,796.3	0.0	19,881.0
PA1114-N	APA - General Fund (Non-Appropriated)	1,179.1	0.0	3,137.0
Fund Source Total:		22,081.0	23,098.0	23,098.0

Revenue Schedule

Agency: Power Authority

Fund: PA1112 Interest Income

AFIS Code	Category of Receipt and Description	FY 2019	FY 2020	FY 2021
4111	TRANSACTION PRIVILEGE TAX	0.0	0.0	0.0
4631	TREASURERS INTEREST INCOME	73.2	70.0	70.0
4634	OTHER INVESTMENT INCOME	32.4	10.0	10.0
Fund Total:		105.6	80.0	80.0

Revenue Schedule

Agency: Power Authority

Fund: PA1113 Fund Deposits

AFIS Code	Category of Receipt and Description	FY 2019	FY 2020	FY 2021
4379	OTHER CHARGES FOR GOODS	20,749.4	19,881.0	19,881.0
4699	MISCELLANEOUS RECEIPTS	46.9	0.0	0.0
Fund Total:		20,796.3	19,881.0	19,881.0

Revenue Schedule

Agency: Power Authority

Fund: PA1114 APA - General Fund

AFIS Code Category of Receipt and Description

	FY 2019	FY 2020	FY 2021
4111	0.0	0.0	0.0
4379	1,177.9	3,000.0	3,000.0
4631	88.6	84.0	84.0
4699	13.5	88.2	88.2
Fund Total:	1,280.0	3,172.2	3,172.2

Sources and Uses of Funds

Agency: Power Authority

Fund: PA1112 Interest Income

Cash Flow Summary	Actual FY 2019	Estimate FY 2020	Estimate FY 2021
Balance Forward from Prior Year	0.0	0.0	0.0
Revenue (From Revenue Schedule)	105.6	80.0	80.0
Total Available	105.6	80.0	80.0
Total Appropriated Disbursements	0.0	0.0	0.0
Total Non-Appropriated Disbursements	105.6	80.0	80.0
Balance Forward to Next Year	0.0	0.0	0.0
Non-Appropriated Expenditure	Actual FY 2019	Estimate FY 2020	Estimate FY 2021
Expenditure Categories			
Personal Services	0.0	0.0	0.0
Employee Related Expenses	0.0	0.0	0.0
Prof. And Outside Services	0.0	0.0	0.0
Travel - In State	0.0	0.0	0.0
Travel - Out of State	0.0	0.0	0.0
Food	0.0	0.0	0.0
Aid to Organizations and Individuals	0.0	0.0	0.0
Other Operating Expenses	105.6	80.0	80.0
Equipment	0.0	0.0	0.0
Capital Outlay	0.0	0.0	0.0
Debt Service	0.0	0.0	0.0
Cost Allocation	0.0	0.0	0.0
Transfers	0.0	0.0	0.0
Expenditure Categories Total:	105.6	80.0	80.0
Cap Transfer due to Fund Balance	0.0	0.0	0.0
Residual Equity Transfer	0.0	0.0	0.0
Prior Commitments or Obligated Expenditures	0.0	0.0	0.0
Non Appropriated 27th Pay Roll	0.0	0.0	0.0
Non-Appropriated Expenditure Total:	105.6	80.0	80.0
Non-Appropriated FTE:	0.0	0.0	0.0

Fund Description

OSP: Interest Income is received from investments with the Arizona State Treasurer and from investments in the Debt Service accounts. This income is used for the operating expenses of the Power Authority.

Sources and Uses of Funds

Agency: Power Authority

Fund: PA1113 Fund Deposits

Cash Flow Summary	Actual FY 2019	Estimate FY 2020	Estimate FY 2021
Revenue (From Revenue Schedule)	20,796.3	19,881.0	19,881.0
Total Available	20,796.3	19,881.0	19,881.0
Total Non-Appropriated Disbursements	20,796.3	19,881.0	19,881.0
Balance Forward to Next Year	0.0	0.0	0.0
Non-Appropriated Expenditure	Actual FY 2019	Estimate FY 2020	Estimate FY 2021
Expenditure Categories	Actual FY 2019	Estimate FY 2020	Estimate FY 2021
Personal Services	687.4	710.7	710.7
Employee Related Expenses	207.7	221.7	221.7
Prof. And Outside Services	390.4	453.8	453.8
Travel - In State	18.6	21.0	21.0
Travel - Out of State	39.2	39.5	39.5
Food	0.0	0.0	0.0
Aid to Organizations and Individuals	0.0	0.0	0.0
Other Operating Expenses	17,698.5	16,660.2	16,660.2
Equipment	23.2	39.8	39.8
Capital Outlay	0.0	0.0	0.0
Debt Service	1,731.3	1,734.3	1,734.3
Cost Allocation	0.0	0.0	0.0
Transfers	0.0	0.0	0.0
Expenditure Categories Total:	20,796.3	19,881.0	19,881.0
Non-Appropriated Expenditure Total:	20,796.3	19,881.0	19,881.0
Non-Appropriated FTE:	7.0	7.0	7.0

Fund Description

OSP: Revenues in this fund are a result of the sale of Hoover power and related transmission. These funds are used to pay for the operating expenses of the Power Authority.

Sources and Uses of Funds

Agency: Power Authority

Fund: PA1114 APA - General Fund

Cash Flow Summary	Actual FY 2019	Estimate FY 2020	Estimate FY 2021
Balance Forward from Prior Year	3,953.7	4,054.6	4,089.8
Revenue (From Revenue Schedule)	1,280.0	3,172.2	3,172.2
Total Available	5,233.7	7,226.8	7,262.0
Total Appropriated Disbursements	0.0	0.0	0.0
Total Non-Appropriated Disbursements	1,179.1	3,137.0	3,137.0
Balance Forward to Next Year	4,054.6	4,089.8	4,125.0
Non-Appropriated Expenditure	Actual FY 2019	Estimate FY 2020	Estimate FY 2021
Expenditure Categories	Actual FY 2019	Estimate FY 2020	Estimate FY 2021
Personal Services	0.0	0.0	0.0
Employee Related Expenses	0.0	0.0	0.0
Prof. And Outside Services	0.0	0.0	0.0
Travel - In State	0.0	0.0	0.0
Travel - Out of State	0.0	0.0	0.0
Food	0.0	0.0	0.0
Aid to Organizations and Individuals	0.0	0.0	0.0
Other Operating Expenses	1,179.1	3,086.6	3,086.6
Equipment	0.0	0.0	0.0
Capital Outlay	0.0	50.4	50.4
Debt Service	0.0	0.0	0.0
Cost Allocation	0.0	0.0	0.0
Transfers	0.0	0.0	0.0
Expenditure Categories Total:	1,179.1	3,137.0	3,137.0
Cap Transfer due to Fund Balance	0.0	0.0	0.0
Residual Equity Transfer	0.0	0.0	0.0
Prior Commitments or Obligated Expenditures	0.0	0.0	0.0
Non Appropriated 27th Pay Roll	0.0	0.0	0.0
Non-Appropriated Expenditure Total:	1,179.1	3,137.0	3,137.0
Non-Appropriated FTE:	0.0	0.0	0.0

Fund Description

OSPB: