

# ARIZONA POWER AUTHORITY BUDGET REQUEST DATA FISCAL YEARS 2023-2025

## TAB

1. ABS Transmittal
2. Agency Summary
3. Five Year Strategic Plan
4. Admin Main Report
5. Fund 1113 & 1114 Revenue Forecast Methodology
6. Org Chart 2023
7. Program Budget Unit Summary of Expenditures & Budget Request for All Funds
8. Program Budget Unit Summary of Expenditures & Budget Request for Selected Funds
9. Program Expenditure Schedule
10. Program Summary of Expenditures & Budget Request for Selected Funds
11. Program Summary of Expenditures & Budget Request
12. Revenue Schedule
13. Funding Issue List
14. Funding Issue Detail
15. Funding Issue Narrative
16. Sources & Uses

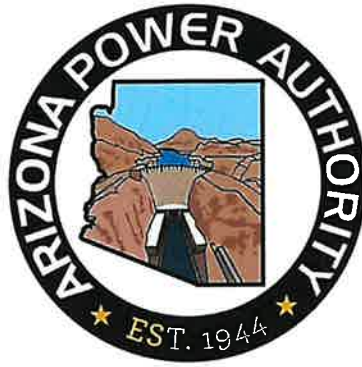
17. Summary of Expenditure & Budget Request for All Funds
18. Summary of Expenditure & Budget Request for Selected Funds

**COMMISSION**

**PHILIP C. BASHAW – CHAIRMAN**  
**JIM SWEENEY – VICE CHAIRMAN**  
**RUSSELL L. JONES – COMMISSIONER**  
**KIM OWENS – COMMISSIONER**  
**JOHN F. SULLIVAN – COMMISSIONER**

**STAFF**

**JORDY FUENTES – EXECUTIVE DIRECTOR**  
**HEATHER COLE – EXECUTIVE SECRETARY**



**ARIZONA POWER AUTHORITY**

**1810 W. ADAMS STREET**  
**PHOENIX, AZ 85007-2697**  
**(602) 368-4265**

**WWW.POWERAUTHORITY.ORG**

September 12, 2023

The Honorable Katie Hobbs  
Office of the Governor  
1700 W. Washington St., Suite 800  
Phoenix, AZ 85007-2883

Dear Governor:

Pursuant to A.R.S. § 35-113, please find one original and one copy of the Arizona Power Authority's ABS reports covering information for fiscal year 2024.

Sincerely,

A handwritten signature in blue ink that reads "Jordy Fuentes". The signature is fluid and cursive, with a long horizontal stroke extending to the right.

Jordy Fuentes  
Executive Director



# State of Arizona Budget Request

State Agency  
Power Authority

A.R.S. Citation: A.R.S. §§ 30-101 et seq.

## Governor Hobbs:

This and the accompanying budget schedules, statements and explanatory information constitute the operating budget request for this agency for Fiscal Year 2025.

To the best of my knowledge all statements and explanations contained in the estimates submitted are true and correct.

Agency Head: **Jordy Fuentes**  
Title: **Executive Director**

*Jorge C Fuentes* 9/12/2023  
(signature)

Phone: 6023684265

Prepared by: Sonseeahray Thayer  
Email Address: sonseeahray@powerauthority.org  
Date Prepared: September 12, 2023

<b>Appropriated Funds</b>		<b>FY 2024 Expenditure Plan</b>	<b>FY 2025 Funding Issue</b>	<b>FY 2025 Total Request</b>
Total Amount Requested:		1,000.0	(1,000.0)	-
General Fund		1,000.0	(1,000.0)	-
APA - General Fund		-	-	-
<b>Non-Appropriated Funds</b>		<b>FY 2024 Expenditure Plan</b>	<b>FY 2025 Funding Issue</b>	<b>FY 2025 Total Request</b>
Total Amount Planned:		20,833.4	-	20,833.4
Interest Income Fund		246.0	-	246.0
Fund Deposits Fund		20,349.0	-	20,349.0
APA - General Fund		238.4	-	238.4
Power Authority Total:		21,833.4	(1,000.0)	20,833.4

## AGENCY SUMMARY

**Program:** PAA Power Authority  
**Director:** Jordy Fuentes, Executive Director  
**Phone:** 6023684265  
**Statute:** A.R.S. §§ 30-101 et seq.  
**Plan Contact:** Sonseeahray Thayer, Financial Administrator  
 6023684265

**Mission:**

*To responsibly administrate the Hoover Power allocation to the State of Arizona. In fulfilling this responsibility, the Power Authority strives to be an active leader in managing electric resources in a safe and environmentally prudent manner, and to provide active representation on behalf of the State of Arizona at federal, state, and local forums on issues that impact the public power community as a whole and that specifically involve Arizona and the Authority's power resources.*

**Description:**

The Arizona Power Authority (APA) manages Arizona's allocation of hydroelectric power from the Hoover Dam for the overall benefit of the state. The APA cooperates with federal, state, and non-governmental agencies to address regulatory, environmental, and other matters that impact electric power and water uses of the Colorado River. In addition, the APA serves as an information resource for its customers on topics that impact their electric resources and the utilization of these resources. The Authority may also pursue generation and/or transmission projects that are within the APA's legislative mandate and are in the best interest of the state.

◆ **Goal 1 To analyze cost of service studies and other factors affecting the cost of power from Hoover Dam, in an effort to keep future power costs to a minimum.**

**Performance Measures:**

ML	Budget	Type	FY 2022 Actual	FY 2023 Estimate	FY 2023 Actual	FY 2024 Estimate	FY 2025 Estimate
X		IP Hoover annual revenue requirements (in thousands).	67,356	72,703	72,428	71,349	75,869

◆ **Goal 2 To ensure the Power Authority has the opportunity to coordinate and cooperate with Federal agencies to supply and deliver Hoover power to the Authority's customers in the State of Arizona.**

**Performance Measures:**

ML	Budget	Type	FY 2022 Actual	FY 2023 Estimate	FY 2023 Actual	FY 2024 Estimate	FY 2025 Estimate
X		IP Customers purchasing power from Arizona Power Authority	63	63	63	63	63

## Agency Summary

Power Authority

Jordy Fuentes, Executive Director

Phone: 6023684265

A.R.S. §§ 30-101 et seq.

### Mission:

*To responsibly administrate the Hoover Power allocation to the State of Arizona. In fulfilling this responsibility, the Power Authority strives to be an active leader in managing electric resources in a safe and environmentally prudent manner, and to provide active representation on behalf of the State of Arizona at federal, state, and local forums on issues that impact the public power community as a whole and that specifically involve Arizona and the Authority's power resources.*

### Description:

The Arizona Power Authority (APA) manages Arizona's allocation of hydroelectric power from the Hoover Dam for the overall benefit of the state. The APA cooperates with federal, state, and non-governmental agencies to address regulatory, environmental, and other matters that impact electric power and water uses of the Colorado River. In addition, the APA serves as an information resource for its customers on topics that impact their electric resources and the utilization of these resources. The Authority may also pursue generation and/or transmission projects that are within the APA's legislative mandate and are in the best interest of the state.

### Agency Summary: (\$ Thousands)

Program	FY 2023 Actual	FY 2024 Estimate	FY 2025 Estimate
▶ Arizona Power Authority	20,023.9	21,833.4	20,833.4
<b>Agency Total:</b>	<b>20,023.9</b>	<b>21,833.4</b>	<b>20,833.4</b>

### Funding:

	FY 2023 Actual	FY 2024 Estimate	FY 2025 Estimate
General Fund	-	1,000.0	-
Other Appropriated Funds	-	-	-
Other Non-Appropriated Funds	20,023.9	20,833.4	20,833.4
<b>Total Funding</b>	<b>20,023.9</b>	<b>21,833.4</b>	<b>20,833.4</b>

<b>FTE Positions</b>	<b>9.0</b>	<b>9.0</b>	<b>9.0</b>
----------------------	------------	------------	------------

## 5 Year Plan

### Description:

### Resource Assumptions

	FY 2026 Estimate	FY 2027 Estimate	FY 2028 Estimate
<b>Full-Time Equivalent Positions</b>	4.0	4.0	4.0
<b>General Fund</b>	-	-	-
<b>Other Appropriated Funds</b>	-	-	-
<b>Non-Appropriated Funds</b>	4.0	4.0	4.0
<b>Federal Funds</b>	-	-	-

- ◆ **Goal 1** To analyze cost of service studies and other factors affecting the cost of power from Hoover Dam, in an effort to keep future power costs to a minimum.

<b>Performance Measures</b>	<b>FY 2022 Actual</b>	<b>FY 2023 Estimate</b>	<b>FY 2023 Actual</b>	<b>FY 2024 Estimate</b>	<b>FY 2025 Estimate</b>
Hoover annual revenue requirements (in thousands).	67,356	72,703	72,428	71,349	75,869

- ◆ **Goal 2** To ensure the Power Authority has the opportunity to coordinate and cooperate with Federal agencies to supply and deliver Hoover power to the Authority's customers in the State of Arizona.

<b>Performance Measures</b>	<b>FY 2022 Actual</b>	<b>FY 2023 Estimate</b>	<b>FY 2023 Actual</b>	<b>FY 2024 Estimate</b>	<b>FY 2025 Estimate</b>
Customers purchasing power from Arizona Power Authority	63	63	63	63	63

# Agency 5 Year Plan

## PAA Power Authority

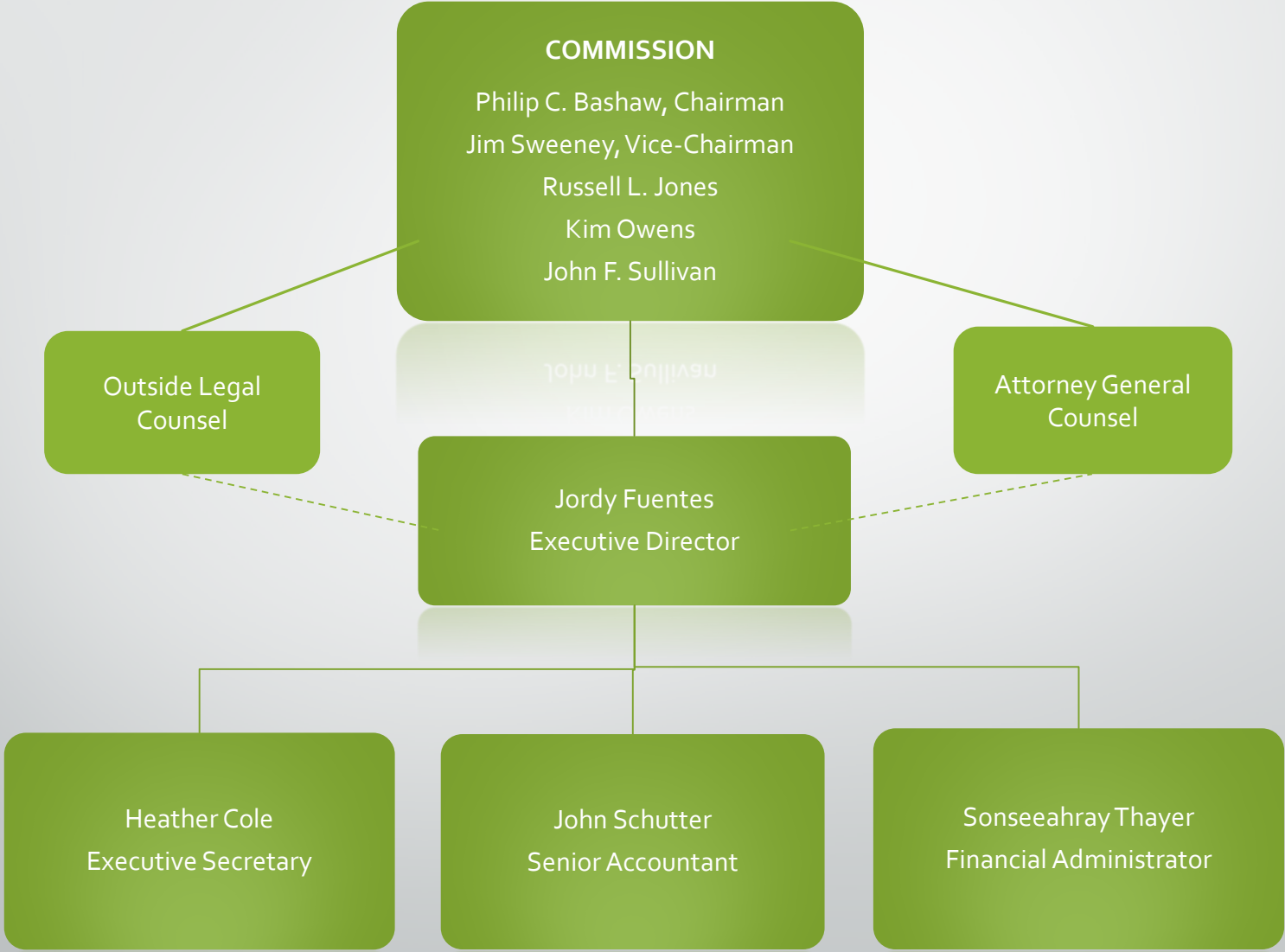
Description:

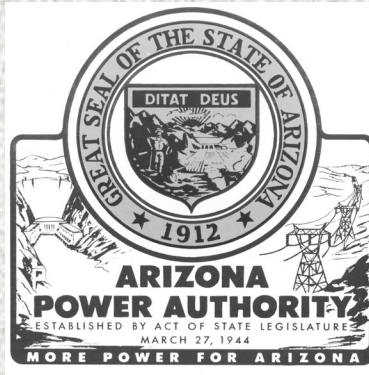
### Resource Assumptions

	FY 2026 Estimate	FY 2027 Estimate	FY 2028 Estimate
Full-Time Equivalent Positions	4.0	4.0	4.0
General Fund	-	-	-
Other Appropriated Funds	-	-	-
Non-Appropriated Funds	4.0	4.0	4.0
Federal Funds	-	-	-



# Organizational Chart





# Arizona Power Authority



## Five Year Strategic Plan FY2025-FY2029

Jordy Fuentes  
Executive Director

## TABLE OF CONTENTS

LETTER FROM EXECUTIVE DIRECTOR.....	2
DESCRIPTION OF BUSINESS.....	3
MISSION STATEMENT .....	4
STRATEGIC ISSUE #1 .....	5
Fiscal Responsibility	
STRATEGIC ISSUE #2 .....	5
Resource Focused	
STRATEGIC ISSUE #3 .....	5
Customer Support	
GOALS & OBJECTIVES.....	6

**COMMISSION**

**PHILIP C. BASHAW – CHAIRMAN**  
**JIM SWEENEY – VICE CHAIRMAN**  
**RUSSELL L. JONES – COMMISSIONER**  
**KIM OWENS – COMMISSIONER**  
**JOHN F. SULLIVAN – COMMISSIONER**

**STAFF**

**JORDY FUENTES – EXECUTIVE DIRECTOR**  
**HEATHER COLE – EXECUTIVE SECRETARY**



**ARIZONA POWER AUTHORITY**

**1810 W. ADAMS STREET**  
**PHOENIX, AZ 85007-2697**  
**(602) 368-4265**

**WWW.POWERAUTHORITY.ORG**

**September 12, 2023**

**I hereby present the Five-Year Strategic Plan for the Arizona Power Authority. This Strategic Plan covers Fiscal Years 2025 through 2029.**

**The Authority remains dedicated to its mission to deliver affordable, reliable clean electric power to its customers throughout Arizona from Hoover Dam. Given the rapid pace of change occurring in the power sector today, Arizona Power Authority is proud to help manage such a reliable, renewable, carbon-free, low-cost energy for our state. It is an important role that will help provide stability for years to come. With the doubling of our current customer base in 2017, the Authority is continuing with a customer service program that will help educate our new customers, encourage existing customers and enhance staff to be better resources in the future. As technology is reshaping the energy market, we will monitor this evolving landscape and make sure Arizona, the Authority and its customers are ready for what lies ahead. Given the potential for retirements of multiple customer representatives, the APA is developing training content for its customers.**

**Thank you,**

A handwritten signature in blue ink, appearing to read "Jordy Fuentes", is written over a horizontal line.

**Jordy Fuentes**  
**Executive Director**

# ARIZONA POWER AUTHORITY

## DESCRIPTION OF BUSINESS

The Arizona Power Authority (the “Authority”) is a body, corporate and politic, without taxing power, established by the Arizona Legislature on May 27, 1944 by the Power Authority Act. Under the Power Authority Act, the Authority is directed to obtain electric power developed from the mainstream of the Colorado River and sell such power to certain qualified purchasers. The Power Authority Act provides that the Authority must be a self-supporting agency and prohibits the Authority from incurring any obligation, which would be binding upon the State of Arizona.

The Authority supplies capacity and energy on a wholesale basis to certain power purchasers in the State of Arizona. The Authority’s primary source of power and energy is the Hoover Power Plant at Hoover Dam, located approximately 25 miles from Las Vegas, Nevada. Hoover Dam was dedicated in 1935 and the first generator of the Hoover Power Plant was in full operation in October 1936 and has been in continuous operation since. Power and energy from the Hoover Power Plant is transmitted to load centers in Arizona, California and Nevada. The Authority first contracted for Arizona’s share of Hoover power in 1952 (approximately 20%) and has continuously provided power and energy to its customers since that time.

The Authority is governed by a commission of five members appointed by the Governor and approved by the State Senate (the “Commission”). The term of office for each member is six years and the members select a chairman and vice-chairman from among its membership for two-year terms.

Pursuant to Arizona law, the Commission serves as the Authority’s regulatory body with the exclusive authority to establish electric prices for the capacity and energy generated at Hoover Dam and sold in Arizona. The Authority is a public nonprofit body, operates as an exempt agency, and is required to follow Open Meeting Laws regarding public notice requirements and public meetings. It also has the authority to implement changes in electric price schedules, as needed.

## **ARIZONA POWER AUTHORITY MISSION**

To responsibly administrate the Hoover Power allocation to the State of Arizona. In fulfilling this responsibility, the Power Authority strives to be an active leader in managing electric resources in a safe and environmentally prudent manner, and to provide active representation on behalf of the State of Arizona at federal, state, and local forums on issues that impact the public power community as a whole and issues that specifically involve Arizona and the Power Authority's power resources.

## STRATEGIC ISSUES

### STRATEGIC ISSUE #1: *Fiscal Responsibility*

Manage resources for APA customers at the lowest possible rates consistent with sound business principles. Review expenditures, scheduled maintenance, additions, improvements and other cost of service factors affecting power generation costs at Hoover Dam.

	FY2022 (actual)	FY2023 (actual)	FY2024 (estimate)	FY2025 (estimate)	FY2026 (estimate)	FY2027 (estimate)
Hoover Annual Revenue Requirements (in thousands)	67,356	72,428	71,349	75,869	79,397	82,735

### STRATEGIC ISSUE #2: *Resource Focused*

The electrical power industry is going through radical changes today, coupled with the complexities of the Colorado River, and makes the APA a good resource for our customers. It is important that the APA understands the Water-Power-Agriculture nexus, works with fellow state agencies and NGOs in arenas vital to the betterment of Arizona, APA's customers and Public Power as a whole.

### STRATEGIC ISSUE #3: *Customer Support*

As our customers face a wave of retirements and we continue to onboard new customers, the APA is developing training programs to assist in these transitions. It also is participating in the apparent shift towards a formalized market, seeking ways to maximize the value of Hoover capacity for its customers.

## ARIZONA POWER AUTHORITY GOALS

2025 through 2029

**GOAL #1:** *To be a leader for Hoover, Arizona, the Colorado River and Public Power as a whole.*

**OBJECTIVES:** Be actively engaged in Hoover management, especially with Engineering and Operations Committee, Technical Review Committee and annual budgeting. Be a resource for all of our 63 customers. Develop and enhance relationships with state and federal legislators and federal staff.

**GOAL #2:** *Strive for Operational Excellence.*

**OBJECTIVES:** Evaluate, educate, enhance and encourage our existing and potential staff. Establish proper staffing for expected workload, provide training for existing staff, and control or reduce costs.

**GOAL #3:** *To Create a Culture of Customer Service.*

**OBJECTIVES:** Continue to improve the relationships with our customers. Have regular meeting with them at the APA and at their place of business. Create a 3<sup>rd</sup> place environment at the APA for customers, with flex workspace, so customers can interact and engage with staff. Provide quarterly/monthly training for customers/staff and legislators.



# Program Expenditure Schedule

**Agency:** Power Authority

## Administrative Costs Summary

**FY 2025**

Personal Services	500.3
ERE	159.9
All Other	560.9
<b>Administrative Costs Total:</b>	<b>1,221.1</b>

## Administrative Costs / Total Expenditure Ratio

**Request**

**Admin %**

**FY 2025**

20,833.4

5.9%

## **Arizona Power Authority**

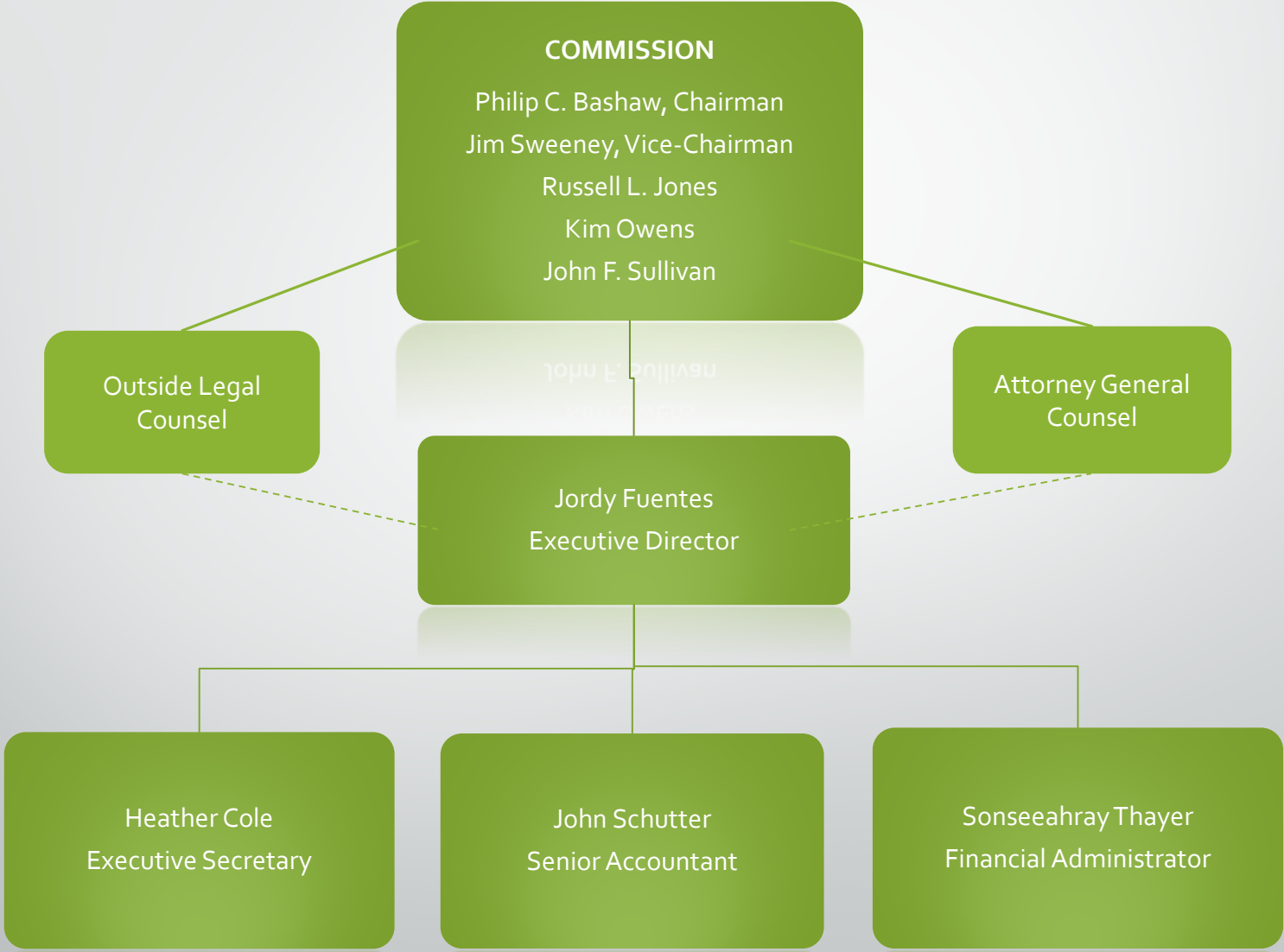
### **Fund 1113 Justification:**

Future revenue which will be deposited into the Fund Deposit Fund (Power Authority) are primarily based upon Western Area Power Administration's projection of energy and capacity from Hoover Dam, debt service, and administration costs.

### **Fund 1114 Justification:**

The primary component is supplemental requested by our customers and is treated as a pass through. Revenues which are deposited in the APA - General Fund are estimated from the anticipated customer needs for the coming year.

# Organizational Chart



## Program Budget Unit Summary of Expenditure and Budget Request for All Funds

**Agency:** Power Authority

	FY 2023 Actuals	FY 2024 Expenditure Plan	FY 2025 Funding Issue	FY 2025 Total Request
<b>Program:</b> PAA-1-0 Arizona Power Authority				

### Expenditure Categories

FTE	9.0	9.0	-	9.0
Personal Services	434.3	500.3	-	500.3
Employee Related Expenditures	112.1	159.9	-	159.9
<b>Subtotal Personal Services and ERE</b>	<b>546.4</b>	<b>660.2</b>	-	<b>660.2</b>
Professional & Outside Services	358.6	400.9	-	400.9
Travel In-State	8.4	13.4	-	13.4
Travel Out-Of-State	27.0	35.5	-	35.5
Other Operating Expenditures	17,315.8	18,941.7	(1,000.0)	17,941.7
Capital Outlay	3.4	5.0	-	5.0
Non-Capital Equipment	22.9	31.9	-	31.9
Debt Service	1,730.3	1,725.8	-	1,725.8
Transfers-Out	11.2	19.0	-	19.0
	-	-	-	-
<b>Expenditure Categories Total:</b>	<b>20,023.9</b>	<b>21,833.4</b>	<b>(1,000.0)</b>	<b>20,833.4</b>

### Fund Source

#### Appropriated Funds

General Fund (Appropriated)	-	1,000.0	(1,000.0)	-
APA - General Fund (Appropriated)	-	-	-	-
<b>Appropriated Funds Total:</b>	<b>-</b>	<b>1,000.0</b>	<b>(1,000.0)</b>	<b>-</b>

#### Non-Appropriated Funds

Interest Income Fund (Non-Appropriated)	49.4	246.0	-	246.0
Fund Deposits Fund (Non-Appropriated)	19,869.4	20,349.0	-	20,349.0
APA - General Fund (Non-Appropriated)	105.0	238.4	-	238.4
<b>Non-Appropriated Funds Total:</b>	<b>20,023.9</b>	<b>20,833.4</b>	-	<b>20,833.4</b>
<b>Arizona Power Authority Total:</b>	<b>20,023.9</b>	<b>21,833.4</b>	<b>(1,000.0)</b>	<b>20,833.4</b>

**Sub Program:** PAA-1-1 Arizona Power Authority

### Expenditure Categories

FTE	9.0	9.0	-	9.0
-----	-----	-----	---	-----

## Program Budget Unit Summary of Expenditure and Budget Request for All Funds

<b>Agency:</b>	<b>Power Authority</b>
----------------	------------------------

	FY 2023 Actuals	FY 2024 Expenditure Plan	FY 2025 Funding Issue	FY 2025 Total Request
<b>Program: PAA-1-0 Arizona Power Authority</b>				
<b>Sub Program: PAA-1-1 Arizona Power Authority</b>				
Personal Services	434.3	500.3	-	500.3
Employee Related Expenditures	112.1	159.9	-	159.9
<b>Subtotal Personal Services and ERE</b>	<b>546.4</b>	<b>660.2</b>	<b>-</b>	<b>660.2</b>
Professional & Outside Services	358.6	400.9	-	400.9
Travel In-State	8.4	13.4	-	13.4
Travel Out-Of-State	27.0	35.5	-	35.5
Other Operating Expenditures	17,315.8	18,941.7	(1,000.0)	17,941.7
Capital Outlay	3.4	5.0	-	5.0
Non-Capital Equipment	22.9	31.9	-	31.9
Debt Service	1,730.3	1,725.8	-	1,725.8
Transfers-Out	11.2	19.0	-	19.0
	-	-	-	-
<b>Expenditure Categories Total:</b>	<b>20,023.9</b>	<b>21,833.4</b>	<b>(1,000.0)</b>	<b>20,833.4</b>
<b>Fund Source</b>				
<b>Appropriated Funds</b>				
General Fund (Appropriated)	-	1,000.0	(1,000.0)	-
APA - General Fund (Appropriated)	-	-	-	-
<b>Appropriated Funds Total:</b>	<b>-</b>	<b>1,000.0</b>	<b>(1,000.0)</b>	<b>-</b>
<b>Non-Appropriated Funds</b>				
Interest Income Fund (Non-Appropriated)	49.4	246.0	-	246.0
Fund Deposits Fund (Non-Appropriated)	19,869.4	20,349.0	-	20,349.0
APA - General Fund (Non-Appropriated)	105.0	238.4	-	238.4
<b>Non-Appropriated Funds Total:</b>	<b>20,023.9</b>	<b>20,833.4</b>	<b>-</b>	<b>20,833.4</b>
<b>Arizona Power Authority Total:</b>	<b>20,023.9</b>	<b>21,833.4</b>	<b>(1,000.0)</b>	<b>20,833.4</b>

## Program Budget Unit Summary of Expenditure and Budget Request for Selected Funds

**Agency:** Power Authority

	FY 2023 Actuals	FY 2024 Expenditure Plan	FY 2025 Funding Issue	FY 2025 Total Request
--	--------------------	--------------------------------	--------------------------	--------------------------

**Program:** PAA-1-0 Arizona Power Authority

**Fund:** AA1000 General Fund

**Appropriated**

Personal Services	-	-	-	-
Employee Related Expenditures	-	-	-	-
<b>Subtotal Personal Services and ERE</b>	-	-	-	-
Professional & Outside Services	-	-	-	-
Travel In-State	-	-	-	-
Travel Out-Of-State	-	-	-	-
Other Operating Expenditures	-	1,000.0	(1,000.0)	-
Capital Outlay	-	-	-	-
Non-Capital Equipment	-	-	-	-
Debt Service	-	-	-	-
Transfers-Out	-	-	-	-
	-	-	-	-
<b>Expenditure Categories Total:</b>	-	1,000.0	(1,000.0)	-
<b>General Fund Total:</b>	-	1,000.0	(1,000.0)	-

**Fund:** PA1112 Interest Income Fund

**Non-Appropriated**

Personal Services	-	-	-	-
Employee Related Expenditures	-	-	-	-
<b>Subtotal Personal Services and ERE</b>	-	-	-	-
Professional & Outside Services	-	-	-	-
Travel In-State	-	-	-	-
Travel Out-Of-State	-	-	-	-
Other Operating Expenditures	49.4	246.0	-	246.0
Capital Outlay	-	-	-	-
Non-Capital Equipment	-	-	-	-
Debt Service	-	-	-	-
Transfers-Out	-	-	-	-
	-	-	-	-

## Program Budget Unit Summary of Expenditure and Budget Request for Selected Funds

**Agency:** Power Authority

	FY 2023 Actuals	FY 2024 Expenditure Plan	FY 2025 Funding Issue	FY 2025 Total Request
<b>Program:</b> PAA-1-0 Arizona Power Authority				

**Fund:** PA1112 Interest Income Fund

<b>Expenditure Categories Total:</b>	49.4	246.0	-	246.0
<b>Interest Income Fund Total:</b>	49.4	246.0	-	246.0

**Fund:** PA1113 Fund Deposits Fund

**Non-Appropriated**

Personal Services	434.3	500.3	-	500.3
Employee Related Expenditures	112.1	159.9	-	159.9
<b>Subtotal Personal Services and ERE</b>	<b>546.4</b>	<b>660.2</b>	<b>-</b>	<b>660.2</b>
Professional & Outside Services	358.6	400.9	-	400.9
Travel In-State	8.4	13.4	-	13.4
Travel Out-Of-State	27.0	35.5	-	35.5
Other Operating Expenditures	17,164.7	17,462.3	-	17,462.3
Capital Outlay	-	-	-	-
Non-Capital Equipment	22.9	31.9	-	31.9
Debt Service	1,730.3	1,725.8	-	1,725.8
Transfers-Out	11.2	19.0	-	19.0
	-	-	-	-
<b>Expenditure Categories Total:</b>	<b>19,869.4</b>	<b>20,349.0</b>	<b>-</b>	<b>20,349.0</b>
<b>Fund Deposits Fund Total:</b>	<b>19,869.4</b>	<b>20,349.0</b>	<b>-</b>	<b>20,349.0</b>

**Fund:** PA1114 APA - General Fund

**Appropriated**

Personal Services	-	-	-	-
Employee Related Expenditures	-	-	-	-
<b>Subtotal Personal Services and ERE</b>	<b>-</b>	<b>-</b>	<b>-</b>	<b>-</b>
Professional & Outside Services	-	-	-	-
Travel In-State	-	-	-	-
Travel Out-Of-State	-	-	-	-
Other Operating Expenditures	-	-	-	-

## Program Budget Unit Summary of Expenditure and Budget Request for Selected Funds

**Agency:** Power Authority

	FY 2023 Actuals	FY 2024 Expenditure Plan	FY 2025 Funding Issue	FY 2025 Total Request
<b>Program:</b> PAA-1-0 Arizona Power Authority				
<b>Fund:</b> PA1114 APA - General Fund				

Capital Outlay	-	-	-	-
Non-Capital Equipment	-	-	-	-
Debt Service	-	-	-	-
Transfers-Out	-	-	-	-
	-	-	-	-
<b>Expenditure Categories Total:</b>	-	-	-	-

**Non-Appropriated**

Personal Services	-	-	-	-
Employee Related Expenditures	-	-	-	-
<b>Subtotal Personal Services and ERE</b>	-	-	-	-
Professional & Outside Services	-	-	-	-
Travel In-State	-	-	-	-
Travel Out-Of-State	-	-	-	-
Other Operating Expenditures	101.6	233.4	-	233.4
Capital Outlay	3.4	5.0	-	5.0
Non-Capital Equipment	-	-	-	-
Debt Service	-	-	-	-
Transfers-Out	-	-	-	-
	-	-	-	-
<b>Expenditure Categories Total:</b>	105.0	238.4	-	238.4
<b>APA - General Fund Total:</b>	105.0	238.4	-	238.4
<b>Program Total for Select Funds:</b>	20,023.9	21,833.4	(1,000.0)	20,833.4

**Sub Program:** PAA-1-1 Arizona Power Authority

**Fund:** AA1000 General Fund

**Appropriated**

Personal Services	-	-	-	-
Employee Related Expenditures	-	-	-	-



## Program Budget Unit Summary of Expenditure and Budget Request for Selected Funds

**Agency:** Power Authority

	FY 2023 Actuals	FY 2024 Expenditure Plan	FY 2025 Funding Issue	FY 2025 Total Request
<b>Program: PAA-1-0 Arizona Power Authority</b>				
<b>Sub Program: PAA-1-1 Arizona Power Authority</b>				
<b>Fund: AA1000 General Fund</b>				
Subtotal Personal Services and ERE	-	-	-	-
Professional & Outside Services	-	-	-	-
Travel In-State	-	-	-	-
Travel Out-Of-State	-	-	-	-
Other Operating Expenditures	-	1,000.0	(1,000.0)	-
Capital Outlay	-	-	-	-
Non-Capital Equipment	-	-	-	-
Debt Service	-	-	-	-
Transfers-Out	-	-	-	-
	-	-	-	-
<b>Expenditure Categories Total:</b>	-	1,000.0	(1,000.0)	-
<b>General Fund Total:</b>	-	1,000.0	(1,000.0)	-

**Fund: PA1112 Interest Income Fund**

<b>Non-Appropriated</b>				
Personal Services	-	-	-	-
Employee Related Expenditures	-	-	-	-
Subtotal Personal Services and ERE	-	-	-	-
Professional & Outside Services	-	-	-	-
Travel In-State	-	-	-	-
Travel Out-Of-State	-	-	-	-
Other Operating Expenditures	49.4	246.0	-	246.0
Capital Outlay	-	-	-	-
Non-Capital Equipment	-	-	-	-
Debt Service	-	-	-	-
Transfers-Out	-	-	-	-
	-	-	-	-
<b>Expenditure Categories Total:</b>	49.4	246.0	-	246.0

## Program Budget Unit Summary of Expenditure and Budget Request for Selected Funds

**Agency:** Power Authority

	FY 2023 Actuals	FY 2024 Expenditure Plan	FY 2025 Funding Issue	FY 2025 Total Request
<b>Program:</b> PAA-1-0 Arizona Power Authority				
<b>Sub Program:</b> PAA-1-1 Arizona Power Authority				
<b>Fund:</b> PA1112 Interest Income Fund				
<b>Interest Income Fund Total:</b>	49.4	246.0	-	246.0

**Fund:** PA1113 Fund Deposits Fund

**Non-Appropriated**

Personal Services	434.3	500.3	-	500.3
Employee Related Expenditures	112.1	159.9	-	159.9
<b>Subtotal Personal Services and ERE</b>	<b>546.4</b>	<b>660.2</b>	<b>-</b>	<b>660.2</b>
Professional & Outside Services	358.6	400.9	-	400.9
Travel In-State	8.4	13.4	-	13.4
Travel Out-Of-State	27.0	35.5	-	35.5
Other Operating Expenditures	17,164.7	17,462.3	-	17,462.3
Capital Outlay	-	-	-	-
Non-Capital Equipment	22.9	31.9	-	31.9
Debt Service	1,730.3	1,725.8	-	1,725.8
Transfers-Out	11.2	19.0	-	19.0
	-	-	-	-
<b>Expenditure Categories Total:</b>	<b>19,869.4</b>	<b>20,349.0</b>	<b>-</b>	<b>20,349.0</b>
<b>Fund Deposits Fund Total:</b>	<b>19,869.4</b>	<b>20,349.0</b>	<b>-</b>	<b>20,349.0</b>

**Fund:** PA1114 APA - General Fund

**Appropriated**

Personal Services	-	-	-	-
Employee Related Expenditures	-	-	-	-
<b>Subtotal Personal Services and ERE</b>	<b>-</b>	<b>-</b>	<b>-</b>	<b>-</b>
Professional & Outside Services	-	-	-	-
Travel In-State	-	-	-	-
Travel Out-Of-State	-	-	-	-
Other Operating Expenditures	-	-	-	-

## Program Budget Unit Summary of Expenditure and Budget Request for Selected Funds

<b>Agency:</b>	<b>Power Authority</b>
----------------	------------------------

	FY 2023 Actuals	FY 2024 Expenditure Plan	FY 2025 Funding Issue	FY 2025 Total Request
<b>Program:</b> PAA-1-0 Arizona Power Authority				
<b>Sub Program:</b> PAA-1-1 Arizona Power Authority				
<b>Fund:</b> PA1114 APA - General Fund				

Capital Outlay	-	-	-	-
Non-Capital Equipment	-	-	-	-
Debt Service	-	-	-	-
Transfers-Out	-	-	-	-
	-	-	-	-
<b>Expenditure Categories Total:</b>	-	-	-	-

<b>Non-Appropriated</b>
-------------------------

Personal Services	-	-	-	-
Employee Related Expenditures	-	-	-	-
<b>Subtotal Personal Services and ERE</b>	-	-	-	-
Professional & Outside Services	-	-	-	-
Travel In-State	-	-	-	-
Travel Out-Of-State	-	-	-	-
Other Operating Expenditures	101.6	233.4	-	233.4
Capital Outlay	3.4	5.0	-	5.0
Non-Capital Equipment	-	-	-	-
Debt Service	-	-	-	-
Transfers-Out	-	-	-	-
	-	-	-	-
<b>Expenditure Categories Total:</b>	<b>105.0</b>	<b>238.4</b>	-	<b>238.4</b>
<b>APA - General Fund Total:</b>	<b>105.0</b>	<b>238.4</b>	-	<b>238.4</b>
<b>Sub Program Total for Select Funds:</b>	<b>20,023.9</b>	<b>21,833.4</b>	<b>(1,000.0)</b>	<b>20,833.4</b>

## Program Expenditure Schedule

**Agency:** Power Authority

	FY 2023 Actuals	FY 2024 Expenditure Plan	FY 2025 Funding Issue	FY 2025 Total Request
<b>Program: PAA-1-0 Arizona Power Authority</b>				
<b>FTE</b>				
FTE	9.0	9.0	-	9.0
<b>Expenditure Category Total:</b>	-	-	-	-
<b>Fund Source</b>				
<b>Non-Appropriated Funds</b>				
PA1113 Fund Deposits Fund (Non-Appropriated)	9.0	9.0	-	9.0
<b>Non-Appropriated Funds Total:</b>	<b>9.0</b>	<b>9.0</b>	<b>-</b>	<b>9.0</b>
<b>Fund Source Total:</b>	<b>9.0</b>	<b>9.0</b>	<b>-</b>	<b>9.0</b>
<b>Personal Services</b>				
Personal Services	428.2	495.5	-	495.5
Board & Commission Members Compensation	6.1	4.8	-	4.8
<b>Expenditure Category Total:</b>	<b>434.3</b>	<b>500.3</b>	<b>-</b>	<b>500.3</b>
<b>Fund Source</b>				
<b>Non-Appropriated Funds</b>				
PA1113 Fund Deposits Fund (Non-Appropriated)	434.3	500.3	-	500.3
<b>Non-Appropriated Funds Total:</b>	<b>434.3</b>	<b>500.3</b>	<b>-</b>	<b>500.3</b>
<b>Fund Source Total:</b>	<b>434.3</b>	<b>500.3</b>	<b>-</b>	<b>500.3</b>
<b>Employee Related Expenditures</b>				
Employee Related Expenses	112.1	159.9	-	159.9
<b>Expenditure Category Total:</b>	<b>112.1</b>	<b>159.9</b>	<b>-</b>	<b>159.9</b>
<b>Fund Source</b>				
<b>Non-Appropriated Funds</b>				
PA1113 Fund Deposits Fund (Non-Appropriated)	112.1	159.9	-	159.9
<b>Non-Appropriated Funds Total:</b>	<b>112.1</b>	<b>159.9</b>	<b>-</b>	<b>159.9</b>
<b>Fund Source Total:</b>	<b>112.1</b>	<b>159.9</b>	<b>-</b>	<b>159.9</b>
<b>Depreciation and Amortization Expenses</b>				
Depreciation and Amortization Expenses	-	-	-	-
<b>Expenditure Category Total:</b>	<b>-</b>	<b>-</b>	<b>-</b>	<b>-</b>
<b>Fund Source</b>				

## Program Expenditure Schedule

**Agency:** Power Authority

	FY 2023 Actuals	FY 2024 Expenditure Plan	FY 2025 Funding Issue	FY 2025 Total Request
<b>Program:</b> PAA-1-0 Arizona Power Authority				

**Non-Appropriated Funds**

PA1113 Fund Deposits Fund (Non-Appropriated)	-	-	-	-
<b>Non-Appropriated Funds Total:</b>	-	-	-	-
<b>Fund Source Total:</b>	-	-	-	-

**Professional & Outside Services**

Professional and Outside Services	-	400.9	-	400.9
External Investment Services	60.5	-	-	-
Other External Financial Services	35.7	-	-	-
External Legal Services	40.2	-	-	-
Other Professional & Outside Services	222.2	-	-	-
<b>Expenditure Category Total:</b>	<b>358.6</b>	<b>400.9</b>	-	<b>400.9</b>

**Fund Source**

**Non-Appropriated Funds**

PA1113 Fund Deposits Fund (Non-Appropriated)	358.6	400.9	-	400.9
<b>Non-Appropriated Funds Total:</b>	<b>358.6</b>	<b>400.9</b>	-	<b>400.9</b>
<b>Fund Source Total:</b>	<b>358.6</b>	<b>400.9</b>	-	<b>400.9</b>

**Travel In-State**

Travel In-State	8.4	13.4	-	13.4
<b>Expenditure Category Total:</b>	<b>8.4</b>	<b>13.4</b>	-	<b>13.4</b>

**Fund Source**

**Non-Appropriated Funds**

PA1113 Fund Deposits Fund (Non-Appropriated)	8.4	13.4	-	13.4
<b>Non-Appropriated Funds Total:</b>	<b>8.4</b>	<b>13.4</b>	-	<b>13.4</b>
<b>Fund Source Total:</b>	<b>8.4</b>	<b>13.4</b>	-	<b>13.4</b>

**Travel Out-Of-State**

Travel Out of State	27.0	35.5	-	35.5
<b>Expenditure Category Total:</b>	<b>27.0</b>	<b>35.5</b>	-	<b>35.5</b>

**Fund Source**

## Program Expenditure Schedule

**Agency:** Power Authority

	FY 2023 Actuals	FY 2024 Expenditure Plan	FY 2025 Funding Issue	FY 2025 Total Request
<b>Program: PAA-1-0 Arizona Power Authority</b>				
<b>Non-Appropriated Funds</b>				
PA1113 Fund Deposits Fund (Non-Appropriated)	27.0	35.5	-	35.5
<b>Non-Appropriated Funds Total:</b>	<b>27.0</b>	<b>35.5</b>	<b>-</b>	<b>35.5</b>
<b>Fund Source Total:</b>	<b>27.0</b>	<b>35.5</b>	<b>-</b>	<b>35.5</b>

### Other Operating Expenditures

Other Operating Expenses	-	18,941.7	(1,000.0)	17,941.7
Risk Management Charges to State Agencies	3.1	-	-	-
Other External Telecommunication Service	7.4	-	-	-
Electricity	15.0	-	-	-
Sanitation Waste Disposal	0.8	-	-	-
Repair & Maintenance - Buildings	22.7	-	-	-
Office Supplies	3.6	-	-	-
Other Resale Supplies	16,305.4	-	-	-
Conference Registration / Attendance Fees	29.7	-	-	-
Internal Printing	0.6	-	-	-
Postage & Delivery	0.1	-	-	-
Other Miscellaneous Operating	927.3	-	-	-
<b>Expenditure Category Total:</b>	<b>17,315.8</b>	<b>18,941.7</b>	<b>(1,000.0)</b>	<b>17,941.7</b>

### Fund Source

<b>Appropriated Funds</b>				
AA1000 General Fund (Appropriated)	-	1,000.0	(1,000.0)	-
PA1114 APA - General Fund (Appropriated)	-	-	-	-
<b>Appropriated Funds Total:</b>	<b>-</b>	<b>1,000.0</b>	<b>(1,000.0)</b>	<b>-</b>
<b>Non-Appropriated Funds</b>				
PA1112 Interest Income Fund (Non-Appropriated)	49.4	246.0	-	246.0
PA1113 Fund Deposits Fund (Non-Appropriated)	17,164.7	17,462.3	-	17,462.3
PA1114 APA - General Fund (Non-Appropriated)	101.6	233.4	-	233.4
<b>Non-Appropriated Funds Total:</b>	<b>17,315.8</b>	<b>17,941.7</b>	<b>-</b>	<b>17,941.7</b>
<b>Fund Source Total:</b>	<b>17,315.8</b>	<b>18,941.7</b>	<b>(1,000.0)</b>	<b>17,941.7</b>

### Capital Outlay

Capital Outlay	3.4	5.0	-	5.0
<b>Expenditure Category Total:</b>	<b>3.4</b>	<b>5.0</b>	<b>-</b>	<b>5.0</b>

## Program Expenditure Schedule

**Agency:** Power Authority

	FY 2023 Actuals	FY 2024 Expenditure Plan	FY 2025 Funding Issue	FY 2025 Total Request
<b>Program: PAA-1-0 Arizona Power Authority</b>				
<b>Fund Source</b>				
<b>Non-Appropriated Funds</b>				
PA1114 APA - General Fund (Non-Appropriated)	3.4	5.0	-	5.0
<b>Non-Appropriated Funds Total:</b>	<b>3.4</b>	<b>5.0</b>	<b>-</b>	<b>5.0</b>
<b>Fund Source Total:</b>	<b>3.4</b>	<b>5.0</b>	<b>-</b>	<b>5.0</b>

<b>Non-Capital Equipment</b>				
Non-Capital Resources	-	31.9	-	31.9
Computer Equipment – Non- Capitalized Purchases	17.1	-	-	-
Purchased or licensed software / website	5.7	-	-	-
<b>Expenditure Category Total:</b>	<b>22.9</b>	<b>31.9</b>	<b>-</b>	<b>31.9</b>

<b>Fund Source</b>				
<b>Non-Appropriated Funds</b>				
PA1113 Fund Deposits Fund (Non-Appropriated)	22.9	31.9	-	31.9
<b>Non-Appropriated Funds Total:</b>	<b>22.9</b>	<b>31.9</b>	<b>-</b>	<b>31.9</b>
<b>Fund Source Total:</b>	<b>22.9</b>	<b>31.9</b>	<b>-</b>	<b>31.9</b>

<b>Debt Service</b>				
Debt Service	1,730.3	1,725.8	-	1,725.8
<b>Expenditure Category Total:</b>	<b>1,730.3</b>	<b>1,725.8</b>	<b>-</b>	<b>1,725.8</b>

<b>Fund Source</b>				
<b>Non-Appropriated Funds</b>				
PA1113 Fund Deposits Fund (Non-Appropriated)	1,730.3	1,725.8	-	1,725.8
<b>Non-Appropriated Funds Total:</b>	<b>1,730.3</b>	<b>1,725.8</b>	<b>-</b>	<b>1,725.8</b>
<b>Fund Source Total:</b>	<b>1,730.3</b>	<b>1,725.8</b>	<b>-</b>	<b>1,725.8</b>

<b>Transfers-Out</b>				
Transfers	11.2	19.0	-	19.0
<b>Expenditure Category Total:</b>	<b>11.2</b>	<b>19.0</b>	<b>-</b>	<b>19.0</b>

<b>Fund Source</b>				
<b>Non-Appropriated Funds</b>				
PA1113 Fund Deposits Fund (Non-Appropriated)	11.2	19.0	-	19.0

## Program Expenditure Schedule

**Agency:** Power Authority

	FY 2023 Actuals	FY 2024 Expenditure Plan	FY 2025 Funding Issue	FY 2025 Total Request
<b>Program:</b> PAA-1-0 Arizona Power Authority				
Non-Appropriated Funds Total:	11.2	19.0	-	19.0
<b>Fund Source Total:</b>	<b>11.2</b>	<b>19.0</b>	<b>-</b>	<b>19.0</b>

**Sub Program:** PAA-1-1 Arizona Power Authority

<b>FTE</b>				
FTE	9.0	9.0	-	9.0
<b>Expenditure Category Total:</b>	-	-	-	-

<b>Fund Source</b>				
Non-Appropriated Funds				
PA1113 Fund Deposits Fund (Non-Appropriated)	9.0	9.0	-	9.0
<b>Non-Appropriated Funds Total:</b>	<b>9.0</b>	<b>9.0</b>	<b>-</b>	<b>9.0</b>
<b>Fund Source Total:</b>	<b>9.0</b>	<b>9.0</b>	<b>-</b>	<b>9.0</b>

<b>Personal Services</b>				
Personal Services	428.2	495.5	-	495.5
Board & Commission Members Compensation	6.1	4.8	-	4.8
<b>Expenditure Category Total:</b>	<b>434.3</b>	<b>500.3</b>	<b>-</b>	<b>500.3</b>

<b>Fund Source</b>				
Non-Appropriated Funds				
PA1113 Fund Deposits Fund (Non-Appropriated)	434.3	500.3	-	500.3
<b>Non-Appropriated Funds Total:</b>	<b>434.3</b>	<b>500.3</b>	<b>-</b>	<b>500.3</b>
<b>Fund Source Total:</b>	<b>434.3</b>	<b>500.3</b>	<b>-</b>	<b>500.3</b>

<b>Employee Related Expenditures</b>				
Employee Related Expenses	112.1	159.9	-	159.9
<b>Expenditure Category Total:</b>	<b>112.1</b>	<b>159.9</b>	<b>-</b>	<b>159.9</b>

<b>Fund Source</b>				
Non-Appropriated Funds				
PA1113 Fund Deposits Fund (Non-Appropriated)	112.1	159.9	-	159.9
<b>Non-Appropriated Funds Total:</b>	<b>112.1</b>	<b>159.9</b>	<b>-</b>	<b>159.9</b>
<b>Fund Source Total:</b>	<b>112.1</b>	<b>159.9</b>	<b>-</b>	<b>159.9</b>



## Program Expenditure Schedule

**Agency:** Power Authority

	FY 2023 Actuals	FY 2024 Expenditure Plan	FY 2025 Funding Issue	FY 2025 Total Request
<b>Program:</b> PAA-1-0 Arizona Power Authority				

**Sub Program:** PAA-1-1 Arizona Power Authority

Depreciation and Amortization Expenses	-	-	-	-
<b>Expenditure Category Total:</b>	-	-	-	-

### Fund Source

#### Non-Appropriated Funds

PA1113 Fund Deposits Fund (Non-Appropriated)	-	-	-	-
<b>Non-Appropriated Funds Total:</b>	-	-	-	-
<b>Fund Source Total:</b>	-	-	-	-

### Professional & Outside Services

Professional and Outside Services	-	400.9	-	400.9
External Investment Services	60.5	-	-	-
Other External Financial Services	35.7	-	-	-
External Legal Services	40.2	-	-	-
Other Professional & Outside Services	222.2	-	-	-
<b>Expenditure Category Total:</b>	<b>358.6</b>	<b>400.9</b>	-	<b>400.9</b>

### Fund Source

#### Non-Appropriated Funds

PA1113 Fund Deposits Fund (Non-Appropriated)	358.6	400.9	-	400.9
<b>Non-Appropriated Funds Total:</b>	<b>358.6</b>	<b>400.9</b>	-	<b>400.9</b>
<b>Fund Source Total:</b>	<b>358.6</b>	<b>400.9</b>	-	<b>400.9</b>

### Travel In-State

Travel In-State	8.4	13.4	-	13.4
<b>Expenditure Category Total:</b>	<b>8.4</b>	<b>13.4</b>	-	<b>13.4</b>

### Fund Source

#### Non-Appropriated Funds

PA1113 Fund Deposits Fund (Non-Appropriated)	8.4	13.4	-	13.4
<b>Non-Appropriated Funds Total:</b>	<b>8.4</b>	<b>13.4</b>	-	<b>13.4</b>
<b>Fund Source Total:</b>	<b>8.4</b>	<b>13.4</b>	-	<b>13.4</b>

### Travel Out-Of-State

## Program Expenditure Schedule

**Agency:** Power Authority

	FY 2023 Actuals	FY 2024 Expenditure Plan	FY 2025 Funding Issue	FY 2025 Total Request
<b>Program:</b> PAA-1-0 Arizona Power Authority				

**Sub Program:** PAA-1-1 Arizona Power Authority

Travel Out of State	27.0	35.5	-	35.5
<b>Expenditure Category Total:</b>	<b>27.0</b>	<b>35.5</b>	<b>-</b>	<b>35.5</b>

### Fund Source

#### Non-Appropriated Funds

PA1113 Fund Deposits Fund (Non-Appropriated)	27.0	35.5	-	35.5
<b>Non-Appropriated Funds Total:</b>	<b>27.0</b>	<b>35.5</b>	<b>-</b>	<b>35.5</b>
<b>Fund Source Total:</b>	<b>27.0</b>	<b>35.5</b>	<b>-</b>	<b>35.5</b>

### Other Operating Expenditures

Other Operating Expenses	-	18,941.7	(1,000.0)	17,941.7
Risk Management Charges to State Agencies	3.1	-	-	-
Other External Telecommunication Service	7.4	-	-	-
Electricity	15.0	-	-	-
Sanitation Waste Disposal	0.8	-	-	-
Repair & Maintenance - Buildings	22.7	-	-	-
Office Supplies	3.6	-	-	-
Other Resale Supplies	16,305.4	-	-	-
Conference Registration / Attendance Fees	29.7	-	-	-
Internal Printing	0.6	-	-	-
Postage & Delivery	0.1	-	-	-
Other Miscellaneous Operating	927.3	-	-	-
<b>Expenditure Category Total:</b>	<b>17,315.8</b>	<b>18,941.7</b>	<b>(1,000.0)</b>	<b>17,941.7</b>

### Fund Source

#### Appropriated Funds

AA1000 General Fund (Appropriated)	-	1,000.0	(1,000.0)	-
PA1114 APA - General Fund (Appropriated)	-	-	-	-
<b>Appropriated Funds Total:</b>	<b>-</b>	<b>1,000.0</b>	<b>(1,000.0)</b>	<b>-</b>

#### Non-Appropriated Funds

PA1112 Interest Income Fund (Non-Appropriated)	49.4	246.0	-	246.0
PA1113 Fund Deposits Fund (Non-Appropriated)	17,164.7	17,462.3	-	17,462.3
PA1114 APA - General Fund (Non-Appropriated)	101.6	233.4	-	233.4
<b>Non-Appropriated Funds Total:</b>	<b>17,315.8</b>	<b>17,941.7</b>	<b>-</b>	<b>17,941.7</b>

## Program Expenditure Schedule

**Agency:** Power Authority

	FY 2023 Actuals	FY 2024 Expenditure Plan	FY 2025 Funding Issue	FY 2025 Total Request
<b>Program:</b> PAA-1-0 Arizona Power Authority				

**Sub Program:** PAA-1-1 Arizona Power Authority

<b>Fund Source Total:</b>	17,315.8	18,941.7	(1,000.0)	17,941.7
---------------------------	----------	----------	-----------	----------

### Capital Outlay

Capital Outlay	3.4	5.0	-	5.0
<b>Expenditure Category Total:</b>	<b>3.4</b>	<b>5.0</b>	<b>-</b>	<b>5.0</b>

### Fund Source

#### Non-Appropriated Funds

PA1114 APA - General Fund (Non-Appropriated)	3.4	5.0	-	5.0
<b>Non-Appropriated Funds Total:</b>	<b>3.4</b>	<b>5.0</b>	<b>-</b>	<b>5.0</b>
<b>Fund Source Total:</b>	<b>3.4</b>	<b>5.0</b>	<b>-</b>	<b>5.0</b>

### Non-Capital Equipment

Non-Capital Resources	-	31.9	-	31.9
Computer Equipment – Non- Capitalized Purchases	17.1	-	-	-
Purchased or licensed software / website	5.7	-	-	-
<b>Expenditure Category Total:</b>	<b>22.9</b>	<b>31.9</b>	<b>-</b>	<b>31.9</b>

### Fund Source

#### Non-Appropriated Funds

PA1113 Fund Deposits Fund (Non-Appropriated)	22.9	31.9	-	31.9
<b>Non-Appropriated Funds Total:</b>	<b>22.9</b>	<b>31.9</b>	<b>-</b>	<b>31.9</b>
<b>Fund Source Total:</b>	<b>22.9</b>	<b>31.9</b>	<b>-</b>	<b>31.9</b>

### Debt Service

Debt Service	1,730.3	1,725.8	-	1,725.8
<b>Expenditure Category Total:</b>	<b>1,730.3</b>	<b>1,725.8</b>	<b>-</b>	<b>1,725.8</b>

### Fund Source

#### Non-Appropriated Funds

PA1113 Fund Deposits Fund (Non-Appropriated)	1,730.3	1,725.8	-	1,725.8
<b>Non-Appropriated Funds Total:</b>	<b>1,730.3</b>	<b>1,725.8</b>	<b>-</b>	<b>1,725.8</b>
<b>Fund Source Total:</b>	<b>1,730.3</b>	<b>1,725.8</b>	<b>-</b>	<b>1,725.8</b>

## Program Expenditure Schedule

**Agency:** Power Authority

	FY 2023 Actuals	FY 2024 Expenditure Plan	FY 2025 Funding Issue	FY 2025 Total Request
<b>Program:</b> PAA-1-0 Arizona Power Authority				
<b>Sub Program:</b> PAA-1-1 Arizona Power Authority				
<b>Transfers-Out</b>				
Transfers	11.2	19.0	-	19.0
<b>Expenditure Category Total:</b>	<b>11.2</b>	<b>19.0</b>	-	<b>19.0</b>
<b>Fund Source</b>				
<b>Non-Appropriated Funds</b>				
PA1113 Fund Deposits Fund (Non-Appropriated)	11.2	19.0	-	19.0
<b>Non-Appropriated Funds Total:</b>	<b>11.2</b>	<b>19.0</b>	-	<b>19.0</b>
<b>Fund Source Total:</b>	<b>11.2</b>	<b>19.0</b>	-	<b>19.0</b>

## Program Summary of Expenditure and Budget Request for Selected Funds

**Agency:** Power Authority

**Program:** Arizona Power Authority

**Fund:** AA1000 General Fund (Appropriated)

<b>Program Expenditures</b>		FY 2023 Actuals	FY 2024 Expenditure Plan	FY 2025 Funding Issue	FY 2025 Total Request
PAA-1-1	Arizona Power Authority	-	1,000.0	(1,000.0)	-
<b>General Fund (Appropriated) Summary Total:</b>		-	<b>1,000.0</b>	<b>(1,000.0)</b>	-
<b>Appropriated Funding</b>					
6000	Personal Services	-	-	-	-
6100	Employee Related Expenditures	-	-	-	-
<b>Subtotal Personal Services and ERE</b>		-	-	-	-
6200	Professional & Outside Services	-	-	-	-
6500	Travel In-State	-	-	-	-
6600	Travel Out-Of-State	-	-	-	-
7000	Other Operating Expenditures	-	1,000.0	(1,000.0)	-
8100	Capital Outlay	-	-	-	-
8500	Non-Capital Equipment	-	-	-	-
8600	Debt Service	-	-	-	-
9100	Transfers-Out	-	-	-	-
		-	-	-	-
<b>Expenditure Categories Total:</b>		-	<b>1,000.0</b>	<b>(1,000.0)</b>	-
<b>Fund AA1000 - A Total:</b>		-	<b>1,000.0</b>	<b>(1,000.0)</b>	-

## Program Summary of Expenditure and Budget Request for Selected Funds

<b>Agency:</b>	<b>Power Authority</b>
<b>Program:</b>	<b>Arizona Power Authority</b>
<b>Fund:</b>	<b>PA1112 Interest Income Fund (Non-Appropriated)</b>

<b>Program Expenditures</b>	FY 2023 Actuals	FY 2024 Expenditure Plan	FY 2025 Funding Issue	FY 2025 Total Request
PAA-1-1 Arizona Power Authority	49.4	246.0	-	246.0
<b>Interest Income Fund (Non-Appropriated)</b>	<b>49.4</b>	<b>246.0</b>	<b>-</b>	<b>246.0</b>
<b>Summary Total:</b>				
<b>Non-Appropriated Funding</b>				
6000 Personal Services	-	-	-	-
6100 Employee Related Expenditures	-	-	-	-
<b>Subtotal Personal Services and ERE</b>	<b>-</b>	<b>-</b>	<b>-</b>	<b>-</b>
6200 Professional & Outside Services	-	-	-	-
6500 Travel In-State	-	-	-	-
6600 Travel Out-Of-State	-	-	-	-
7000 Other Operating Expenditures	49.4	246.0	-	246.0
8100 Capital Outlay	-	-	-	-
8500 Non-Capital Equipment	-	-	-	-
8600 Debt Service	-	-	-	-
9100 Transfers-Out	-	-	-	-
	-	-	-	-
<b>Expenditure Categories Total:</b>	<b>49.4</b>	<b>246.0</b>	<b>-</b>	<b>246.0</b>
<b>Fund PA1112 - N Total:</b>	<b>49.4</b>	<b>246.0</b>	<b>-</b>	<b>246.0</b>

## Program Summary of Expenditure and Budget Request for Selected Funds

<b>Agency:</b>	<b>Power Authority</b>
<b>Program:</b>	<b>Arizona Power Authority</b>
<b>Fund:</b>	<b>PA1113 Fund Deposits Fund (Non-Appropriated)</b>

<b>Program Expenditures</b>	FY 2023 Actuals	FY 2024 Expenditure Plan	FY 2025 Funding Issue	FY 2025 Total Request
PAA-1-1 Arizona Power Authority	19,869.4	20,349.0	-	20,349.0
<b>Fund Deposits Fund (Non-Appropriated)</b>	<b>19,869.4</b>	<b>20,349.0</b>	-	<b>20,349.0</b>
<b>Summary Total:</b>	<b>19,869.4</b>	<b>20,349.0</b>	-	<b>20,349.0</b>
<b>Non-Appropriated Funding</b>				
6000 Personal Services	434.3	500.3	-	500.3
6100 Employee Related Expenditures	112.1	159.9	-	159.9
<b>Subtotal Personal Services and ERE</b>	<b>546.4</b>	<b>660.2</b>	-	<b>660.2</b>
6200 Professional & Outside Services	358.6	400.9	-	400.9
6500 Travel In-State	8.4	13.4	-	13.4
6600 Travel Out-Of-State	27.0	35.5	-	35.5
7000 Other Operating Expenditures	17,164.7	17,462.3	-	17,462.3
8100 Capital Outlay	-	-	-	-
8500 Non-Capital Equipment	22.9	31.9	-	31.9
8600 Debt Service	1,730.3	1,725.8	-	1,725.8
9100 Transfers-Out	11.2	19.0	-	19.0
	-	-	-	-
<b>Expenditure Categories Total:</b>	<b>19,869.4</b>	<b>20,349.0</b>	-	<b>20,349.0</b>
<b>Fund PA1113 - N Total:</b>	<b>19,869.4</b>	<b>20,349.0</b>	-	<b>20,349.0</b>

## Program Summary of Expenditure and Budget Request for Selected Funds

<b>Agency:</b>	<b>Power Authority</b>
<b>Program:</b>	<b>Arizona Power Authority</b>
<b>Fund:</b>	<b>PA1114 APA - General Fund (Appropriated)</b>

	FY 2023 Actuals	FY 2024 Expenditure Plan	FY 2025 Funding Issue	FY 2025 Total Request
<b>Program Expenditures</b>				
PAA-1-1 Arizona Power Authority	-	-	-	-
<b>APA - General Fund (Appropriated) Summary Total:</b>	-	-	-	-
<b>Appropriated Funding</b>				
6000 Personal Services	-	-	-	-
6100 Employee Related Expenditures	-	-	-	-
<b>Subtotal Personal Services and ERE</b>	-	-	-	-
6200 Professional & Outside Services	-	-	-	-
6500 Travel In-State	-	-	-	-
6600 Travel Out-Of-State	-	-	-	-
7000 Other Operating Expenditures	-	-	-	-
8100 Capital Outlay	-	-	-	-
8500 Non-Capital Equipment	-	-	-	-
8600 Debt Service	-	-	-	-
9100 Transfers-Out	-	-	-	-
<b>Expenditure Categories Total:</b>	-	-	-	-
<b>Fund PA1114 - A Total:</b>	-	-	-	-



## Program Summary of Expenditure and Budget Request for Selected Funds

<b>Agency:</b>	<b>Power Authority</b>
<b>Program:</b>	<b>Arizona Power Authority</b>
<b>Fund:</b>	<b>PA1114 APA - General Fund (Non-Appropriated)</b>

<b>Program Expenditures</b>	FY 2023 Actuals	FY 2024 Expenditure Plan	FY 2025 Funding Issue	FY 2025 Total Request
PAA-1-1 Arizona Power Authority	105.0	238.4	-	238.4
<b>APA - General Fund (Non-Appropriated) Summary Total:</b>	<b>105.0</b>	<b>238.4</b>	-	<b>238.4</b>
<b>Non-Appropriated Funding</b>				
6000 Personal Services	-	-	-	-
6100 Employee Related Expenditures	-	-	-	-
<b>Subtotal Personal Services and ERE</b>	-	-	-	-
6200 Professional & Outside Services	-	-	-	-
6500 Travel In-State	-	-	-	-
6600 Travel Out-Of-State	-	-	-	-
7000 Other Operating Expenditures	101.6	233.4	-	233.4
8100 Capital Outlay	3.4	5.0	-	5.0
8500 Non-Capital Equipment	-	-	-	-
8600 Debt Service	-	-	-	-
9100 Transfers-Out	-	-	-	-
	-	-	-	-
<b>Expenditure Categories Total:</b>	<b>105.0</b>	<b>238.4</b>	-	<b>238.4</b>
<b>Fund PA1114 - N Total:</b>	105.0	238.4	-	238.4
<b>Arizona Power Authority Total:</b>	20,023.9	21,833.4	(1,000.0)	20,833.4

## Program Summary of Expenditure and Budget Request

**Agency:** Power Authority

**Program:** Arizona Power Authority

<b>Program Summary</b>		<b>FY 2023 Actuals</b>	<b>FY 2024 Expenditure Plan</b>	<b>FY 2025 Funding Issue</b>	<b>FY 2025 Total Request</b>
PAA-1-1	Arizona Power Authority	20,023.9	21,833.4	(1,000.0)	20,833.4
<b>Arizona Power Authority Summary Total:</b>		<b>20,023.9</b>	<b>21,833.4</b>	<b>(1,000.0)</b>	<b>20,833.4</b>
<b>Expenditure Categories</b>					
FTE	FTE	9.0	9.0	-	9.0
6000	Personal Services	434.3	500.3	-	500.3
6100	Employee Related Expenditures	112.1	159.9	-	159.9
<b>Subtotal Personal Services and ERE</b>		<b>546.4</b>	<b>660.2</b>	<b>-</b>	<b>660.2</b>
6200	Professional & Outside Services	358.6	400.9	-	400.9
6500	Travel In-State	8.4	13.4	-	13.4
6600	Travel Out-Of-State	27.0	35.5	-	35.5
7000	Other Operating Expenditures	17,315.8	18,941.7	(1,000.0)	17,941.7
8100	Capital Outlay	3.4	5.0	-	5.0
8500	Non-Capital Equipment	22.9	31.9	-	31.9
8600	Debt Service	1,730.3	1,725.8	-	1,725.8
9100	Transfers-Out	11.2	19.0	-	19.0
		-	-	-	-
<b>Expenditure Categories Total:</b>		<b>20,023.9</b>	<b>21,833.4</b>	<b>(1,000.0)</b>	<b>20,833.4</b>
<b>Fund Source</b>					
<b>Appropriated Funds</b>					
AA1000	General Fund (Appropriated)	-	1,000.0	(1,000.0)	-
PA1114	APA - General Fund (Appropriated)	-	-	-	-
<b>Appropriated Funds Total:</b>		<b>-</b>	<b>1,000.0</b>	<b>(1,000.0)</b>	<b>-</b>
<b>Non-Appropriated Funds</b>					
PA1112	Interest Income Fund (Non-Appropriated)	49.4	246.0	-	246.0
PA1113	Fund Deposits Fund (Non-Appropriated)	19,869.4	20,349.0	-	20,349.0
PA1114	APA - General Fund (Non-Appropriated)	105.0	238.4	-	238.4
<b>Non-Appropriated Funds Total:</b>		<b>20,023.9</b>	<b>20,833.4</b>	<b>-</b>	<b>20,833.4</b>
<b>Arizona Power Authority Summary Total:</b>		<b>20,023.9</b>	<b>21,833.4</b>	<b>(1,000.0)</b>	<b>20,833.4</b>

## Revenue Schedule

**Agency:** Power Authority

**Fund:** PA1112 Interest Income Fund

AFIS Code	Category of Receipt and Description	FY 2023 Actuals	FY 2024 Estimate	FY 2025 Request
4631	Treasurer's Interest Income	31.8	180.0	180.0
4634	Other Investment Income	17.6	66.0	66.0
<b>Interest Income Fund Total:</b>		<b>49.4</b>	<b>246.0</b>	<b>246.0</b>

Forecast Methodology

**Fund:** PA1113 Fund Deposits Fund

AFIS Code	Category of Receipt and Description	FY 2023 Actuals	FY 2024 Estimate	FY 2025 Request
4379	Other Charges for Goods	19,848.3	20,349.0	20,349.0
4699	Miscellaneous Receipts	21.1	-	-
<b>Fund Deposits Fund Total:</b>		<b>19,869.4</b>	<b>20,349.0</b>	<b>20,349.0</b>

Forecast Methodology

See Attachment

**Fund:** PA1114 APA - General Fund

AFIS Code	Category of Receipt and Description	FY 2023 Actuals	FY 2024 Estimate	FY 2025 Request
4379	Other Charges for Goods	68.8	58.4	58.4
4631	Treasurer's Interest Income	25.0	168.0	168.0
4901	Operating Transfers In	11.2	12.0	12.0
<b>APA - General Fund Total:</b>		<b>105.0</b>	<b>238.4</b>	<b>238.4</b>

Forecast Methodology

See Attachment

# Funding Issue List

**Agency:** Power Authority

FY 2025

Priority	Funding Issue Title	Total FTE	Total Amount	General Fund	Other Appropriated Funds	Non- Appropriated Funds
	Remove FY25 One-time GF appropriations	-	(1,000.0)	(1,000.0)	-	-
	<b>Total:</b>	-	(1,000.0)	(1,000.0)	-	-

# Funding Issue Detail

**Agency:** Power Authority

**Issue:** Remove FY25 One-time GF appropriations

**Calculated ERE:**  
**Uniform Allowance:**

**Program:** Arizona Power Authority  
**Fund:** AA1000 General Fund (Appropriated)

<b>Expenditure Categories</b>		<b>FY 2025</b>
7000	Other Operating Expenditures	(1,000.0)
<b>Program/Fund Total:</b>		<b>(1,000.0)</b>

## Funding Issue Narrative

**Agency:** Power Authority

**Issue:** Remove FY25 One-time GF appropriations

**Description of Issue:** To Remove a one time appropriation for FY24 from FY25

**Proposal:** To Remove a one time appropriation for FY24 from FY25

**Alternatives Considered:** NA

**Impact of Not Funding This Year:** NA

**Statutory Reference:**

**Equipment to be Purchased (if applicable):**

**Classification of New Positions:**

**Annualization(s):**

**Alignment with Agency's Strategic Plan or Statutory Responsibilities:**

**Impact on Historically Underserved, Marginalized, or Adversely Affected Groups:** NA

**How has feedback been incorporated from groups directly impacted by proposal?:** NA

**Description of how this furthers the Governor's priorities:**

## Sources and Uses

**Agency:** Power Authority

**Fund:** PA1112 Interest Income Fund

Interest Income is received from investments with the Arizona State Treasurer and from investments in the Debt Service accounts. This income is used for the operating expenses of the Power Authority.

### Cash Flow Summary

	FY 2023 Actuals	FY 2024 Estimate	FY 2025 Request
Beginning Balance	-	-	-
Revenue (from Revenue Schedule)	49.4	246.0	246.0
<b>Total Available</b>	<b>49.4</b>	<b>246.0</b>	<b>246.0</b>
Total Appropriated Disbursements	-	-	-
Total Non-Appropriated Disbursements	49.4	246.0	246.0
Balance Forward to Next Year	-	-	-

Explanation for Negative Ending Balance(s): Power Authority

### Appropriated Expenditure

Expenditure Categories	FY 2023 Actuals	FY 2024 Estimate	FY 2025 Request
Personal Services	-	-	-
Employee Related Expenditures	-	-	-
Professional & Outside Services	-	-	-
Travel In-State	-	-	-
Travel Out-Of-State	-	-	-
Food	-	-	-
Aid To Organizations & Individuals	-	-	-
Other Operating Expenditures	-	-	-
Equipment	-	-	-
Capital Outlay	-	-	-
Capital Equipment	-	-	-
Non-Capital Equipment	-	-	-
Debt Service	-	-	-
Cost Allocation & Indirect Costs	-	-	-
Transfers-Out	-	-	-
<b>Appropriated Expenditure Sub-Total:</b>	<b>-</b>	<b>-</b>	<b>-</b>
Non-Lapsing Authority from Prior Years (no entry for BY)	-	-	-
Administrative Adjustments (no entry for BY)	-	-	-
Capital Projects (Land, Bldgs, Improv)	-	-	-
Appropriated 27th Pay Roll	-	-	-
Legislative Fund Transfers	-	-	-
IT Project Transfers	-	-	-

## Sources and Uses

<b>Agency:</b>	<b>Power Authority</b>
----------------	------------------------

<b>Fund:</b>	<b>PA1112 Interest Income Fund</b>
--------------	------------------------------------

Residual Equity Transfer	-	-	-
Transfer Due to Fund Balance Cap	-	-	-
Prior Committed or Obligated Expenditures (no entry for AY)	-	-	-
Non-Appropriated 27th Pay Roll	-	-	-
<b>Appropriated Expenditure Total:</b>	-	-	-
<b>Appropriated FTE</b>	-	-	-

<b>Non-Appropriated Expenditure</b>
-------------------------------------

	FY 2023 Actuals	FY 2024 Estimate	FY 2025 Request
<b>Expenditure Categories</b>			
Personal Services	-	-	-
Employee Related Expenditures	-	-	-
Professional & Outside Services	-	-	-
Travel In-State	-	-	-
Travel Out-Of-State	-	-	-
Food	-	-	-
Aid To Organizations & Individuals	-	-	-
Other Operating Expenditures	49.4	246.0	246.0
Equipment	-	-	-
Capital Outlay	-	-	-
Capital Equipment	-	-	-
Non-Capital Equipment	-	-	-
Debt Service	-	-	-
Cost Allocation & Indirect Costs	-	-	-
Transfers-Out	-	-	-
<b>Non-Appropriated Expenditure Sub-Total:</b>	<b>49.4</b>	<b>246.0</b>	<b>246.0</b>
Non-Lapsing Authority from Prior Years (no entry for BY)	-	-	-
Administrative Adjustments (no entry for BY)	-	-	-
Capital Projects (Land, Bldgs, Improv)	-	-	-
Appropriated 27th Pay Roll	-	-	-
Legislative Fund Transfers	-	-	-
IT Project Transfers	-	-	-
Residual Equity Transfer	-	-	-
Transfer Due to Fund Balance Cap	-	-	-
Prior Committed or Obligated Expenditures (no entry for AY)	-	-	-
Non-Appropriated 27th Pay Roll	-	-	-
<b>Non-Appropriated Expenditure Total:</b>	<b>49.4</b>	<b>246.0</b>	<b>246.0</b>



## Sources and Uses

**Agency:** Power Authority

**Fund:** PA1112 Interest Income Fund

**Non-Appropriated FTE**

- - -

## Sources and Uses

<b>Agency:</b>	<b>Power Authority</b>
----------------	------------------------

<b>Fund:</b>	<b>PA1113 Fund Deposits Fund</b>
--------------	----------------------------------

Revenues in this fund are a result of the sale of Hoover power and related transmission. These funds are used to pay for the operating expenses of the Power Authority.

<b>Cash Flow Summary</b>	<b>FY 2023 Actuals</b>	<b>FY 2024 Estimate</b>	<b>FY 2025 Request</b>
Beginning Balance	-	(0.0)	(0.0)
Revenue (from Revenue Schedule)	19,869.4	20,349.0	20,349.0
<b>Total Available</b>	<b>19,869.4</b>	<b>20,349.0</b>	<b>20,349.0</b>
Total Appropriated Disbursements	-	-	-
Total Non-Appropriated Disbursements	19,869.4	20,349.0	20,349.0
Balance Forward to Next Year	(0.0)	(0.0)	(0.0)

Explanation for Negative Ending Balance(s): Power Authority

<b>Appropriated Expenditure</b>	<b>FY 2023 Actuals</b>	<b>FY 2024 Estimate</b>	<b>FY 2025 Request</b>
<b>Expenditure Categories</b>			
Personal Services	-	-	-
Employee Related Expenditures	-	-	-
Professional & Outside Services	-	-	-
Travel In-State	-	-	-
Travel Out-Of-State	-	-	-
Food	-	-	-
Aid To Organizations & Individuals	-	-	-
Other Operating Expenditures	-	-	-
Equipment	-	-	-
Capital Outlay	-	-	-
Capital Equipment	-	-	-
Non-Capital Equipment	-	-	-
Debt Service	-	-	-
Cost Allocation & Indirect Costs	-	-	-
Transfers-Out	-	-	-
<b>Appropriated Expenditure Sub-Total:</b>	<b>-</b>	<b>-</b>	<b>-</b>
Non-Lapsing Authority from Prior Years (no entry for BY)	-	-	-
Administrative Adjustments (no entry for BY)	-	-	-
Capital Projects (Land, Bldgs, Improv)	-	-	-
Appropriated 27th Pay Roll	-	-	-
Legislative Fund Transfers	-	-	-
IT Project Transfers	-	-	-

## Sources and Uses

<b>Agency:</b>	<b>Power Authority</b>
----------------	------------------------

<b>Fund:</b>	<b>PA1113 Fund Deposits Fund</b>
--------------	----------------------------------

Residual Equity Transfer	-	-	-
Transfer Due to Fund Balance Cap	-	-	-
Prior Committed or Obligated Expenditures (no entry for AY)	-	-	-
Non-Appropriated 27th Pay Roll	-	-	-
<b>Appropriated Expenditure Total:</b>	-	-	-
<b>Appropriated FTE</b>	-	-	-

<b>Non-Appropriated Expenditure</b>
-------------------------------------

	FY 2023 Actuals	FY 2024 Estimate	FY 2025 Request
<b>Expenditure Categories</b>			
Personal Services	434.3	500.3	500.3
Employee Related Expenditures	112.1	159.9	159.9
Professional & Outside Services	358.6	400.9	400.9
Travel In-State	8.4	13.4	13.4
Travel Out-Of-State	27.0	35.5	35.5
Food	-	-	-
Aid To Organizations & Individuals	-	-	-
Other Operating Expenditures	17,164.7	17,462.3	17,462.3
Equipment	-	-	-
Capital Outlay	-	-	-
Capital Equipment	-	-	-
Non-Capital Equipment	22.9	31.9	31.9
Debt Service	1,730.3	1,725.8	1,725.8
Cost Allocation & Indirect Costs	-	-	-
Transfers-Out	11.2	19.0	19.0
<b>Non-Appropriated Expenditure Sub-Total:</b>	<b>19,869.4</b>	<b>20,349.0</b>	<b>20,349.0</b>
Non-Lapsing Authority from Prior Years (no entry for BY)	-	-	-
Administrative Adjustments (no entry for BY)	-	-	-
Capital Projects (Land, Bldgs, Improv)	-	-	-
Appropriated 27th Pay Roll	-	-	-
Legislative Fund Transfers	-	-	-
IT Project Transfers	-	-	-
Residual Equity Transfer	-	-	-
Transfer Due to Fund Balance Cap	-	-	-
Prior Committed or Obligated Expenditures (no entry for AY)	-	-	-
Non-Appropriated 27th Pay Roll	-	-	-
<b>Non-Appropriated Expenditure Total:</b>	<b>19,869.4</b>	<b>20,349.0</b>	<b>20,349.0</b>

## Sources and Uses

**Agency:** Power Authority

**Fund:** PA1113 Fund Deposits Fund

**Non-Appropriated FTE**

9.0

9.0

9.0

## Sources and Uses

<b>Agency:</b>	<b>Power Authority</b>
----------------	------------------------

<b>Fund:</b>	<b>PA1114 APA - General Fund</b>
--------------	----------------------------------

<b>Cash Flow Summary</b>	<b>FY 2023 Actuals</b>	<b>FY 2024 Estimate</b>	<b>FY 2025 Request</b>
Beginning Balance	-	(0.0)	(0.0)
Revenue (from Revenue Schedule)	105.0	238.4	238.4
<b>Total Available</b>	<b>105.0</b>	<b>238.4</b>	<b>238.4</b>
Total Appropriated Disbursements	-	-	-
Total Non-Appropriated Disbursements	105.0	238.4	238.4
Balance Forward to Next Year	(0.0)	(0.0)	(0.0)

Explanation for Negative Ending Balance(s): Power Authority

<b>Appropriated Expenditure</b>	<b>FY 2023 Actuals</b>	<b>FY 2024 Estimate</b>	<b>FY 2025 Request</b>
<b>Expenditure Categories</b>			
Personal Services	-	-	-
Employee Related Expenditures	-	-	-
Professional & Outside Services	-	-	-
Travel In-State	-	-	-
Travel Out-Of-State	-	-	-
Food	-	-	-
Aid To Organizations & Individuals	-	-	-
Other Operating Expenditures	-	-	-
Equipment	-	-	-
Capital Outlay	-	-	-
Capital Equipment	-	-	-
Non-Capital Equipment	-	-	-
Debt Service	-	-	-
Cost Allocation & Indirect Costs	-	-	-
Transfers-Out	-	-	-
<b>Appropriated Expenditure Sub-Total:</b>	-	-	-
Non-Lapsing Authority from Prior Years (no entry for BY)	-	-	-
Administrative Adjustments (no entry for BY)	-	-	-
Capital Projects (Land, Bldgs, Improv)	-	-	-
Appropriated 27th Pay Roll	-	-	-
Legislative Fund Transfers	-	-	-
IT Project Transfers	-	-	-
Residual Equity Transfer	-	-	-

## Sources and Uses

<b>Agency:</b>	<b>Power Authority</b>
----------------	------------------------

<b>Fund:</b>	<b>PA1114 APA - General Fund</b>
--------------	----------------------------------

Transfer Due to Fund Balance Cap	-	-	-
Prior Committed or Obligated Expenditures (no entry for AY)	-	-	-
Non-Appropriated 27th Pay Roll	-	-	-
<b>Appropriated Expenditure Total:</b>	-	-	-
<b>Appropriated FTE</b>	-	-	-

<b>Non-Appropriated Expenditure</b>
-------------------------------------

Expenditure Categories	FY 2023 Actuals	FY 2024 Estimate	FY 2025 Request
Personal Services	-	-	-
Employee Related Expenditures	-	-	-
Professional & Outside Services	-	-	-
Travel In-State	-	-	-
Travel Out-Of-State	-	-	-
Food	-	-	-
Aid To Organizations & Individuals	-	-	-
Other Operating Expenditures	101.6	233.4	233.4
Equipment	-	-	-
Capital Outlay	3.4	5.0	5.0
Capital Equipment	-	-	-
Non-Capital Equipment	-	-	-
Debt Service	-	-	-
Cost Allocation & Indirect Costs	-	-	-
Transfers-Out	-	-	-
<b>Non-Appropriated Expenditure Sub-Total:</b>	<b>105.0</b>	<b>238.4</b>	<b>238.4</b>
Non-Lapsing Authority from Prior Years (no entry for BY)	-	-	-
Administrative Adjustments (no entry for BY)	-	-	-
Capital Projects (Land, Bldgs, Improv)	-	-	-
Appropriated 27th Pay Roll	-	-	-
Legislative Fund Transfers	-	-	-
IT Project Transfers	-	-	-
Residual Equity Transfer	-	-	-
Transfer Due to Fund Balance Cap	-	-	-
Prior Committed or Obligated Expenditures (no entry for AY)	-	-	-
Non-Appropriated 27th Pay Roll	-	-	-
<b>Non-Appropriated Expenditure Total:</b>	<b>105.0</b>	<b>238.4</b>	<b>238.4</b>
<b>Non-Appropriated FTE</b>	-	-	-

**Sources and Uses**

**Agency:** Power Authority

## Summary of Expenditure and Budget Request for All Funds

<b>Agency:</b>	<b>Power Authority</b>
----------------	------------------------

	FY 2023 Actuals	FY 2024 Expenditure Plan	FY 2025 Funding Issue	FY 2025 Total Request
<b>Appropriated Funds</b>				
<b>Program:</b>				
PAA-1-0 Arizona Power Authority	-	1,000.0	(1,000.0)	-
<b>Appropriated Funds Total:</b>	-	<b>1,000.0</b>	<b>(1,000.0)</b>	-
<b>Expenditure Categories</b>				
FTE	-	-	-	-
Personal Services	-	-	-	-
Employee Related Expenditures	-	-	-	-
<b>Subtotal Personal Services and ERE</b>	-	-	-	-
Professional & Outside Services	-	-	-	-
Travel In-State	-	-	-	-
Travel Out-Of-State	-	-	-	-
Other Operating Expenditures	-	1,000.0	(1,000.0)	-
Capital Outlay	-	-	-	-
Non-Capital Equipment	-	-	-	-
Debt Service	-	-	-	-
Transfers-Out	-	-	-	-
	-	-	-	-
<b>Expenditure Categories Total:</b>	-	<b>1,000.0</b>	<b>(1,000.0)</b>	-



## Summary of Expenditure and Budget Request for All Funds

Agency: <b>Power Authority</b>					
<b>Non-Appropriated</b>		FY 2023 Actuals	FY 2024 Expenditure Plan	FY 2025 Funding Issue	FY 2025 Total Request
<b>Program:</b>					
PAA-1-0	Arizona Power Authority	20,023.9	20,833.4	-	20,833.4
<b>Non-Appropriated Total:</b>		<b>20,023.9</b>	<b>20,833.4</b>	<b>-</b>	<b>20,833.4</b>
<b>Expenditure Categories</b>					
	FTE	9.0	9.0	-	9.0
	Personal Services	434.3	500.3	-	500.3
	Employee Related Expenditures	112.1	159.9	-	159.9
	<b>Subtotal Personal Services and ERE</b>	<b>546.4</b>	<b>660.2</b>	<b>-</b>	<b>660.2</b>
	Professional & Outside Services	358.6	400.9	-	400.9
	Travel In-State	8.4	13.4	-	13.4
	Travel Out-Of-State	27.0	35.5	-	35.5
	Other Operating Expenditures	17,315.8	17,941.7	-	17,941.7
	Capital Outlay	3.4	5.0	-	5.0
	Non-Capital Equipment	22.9	31.9	-	31.9
	Debt Service	1,730.3	1,725.8	-	1,725.8
	Transfers-Out	11.2	19.0	-	19.0
		-	-	-	-
<b>Expenditure Categories Total:</b>		<b>20,023.9</b>	<b>20,833.4</b>	<b>-</b>	<b>20,833.4</b>
<b>Power Authority Total for All Funds:</b>		<b>20,023.9</b>	<b>21,833.4</b>	<b>(1,000.0)</b>	<b>20,833.4</b>
<b>Appropriated and Non-Appropriated</b>		FY 2023 Actuals	FY 2024 Expenditure Plan	FY 2024 Funding Issue	FY 2025 Total Request
PAA-1-0	Arizona Power Authority	20,023.9	21,833.4	(1,000.0)	20,833.4
<b>Power Authority Total for All Funds:</b>		<b>20,023.9</b>	<b>21,833.4</b>	<b>(1,000.0)</b>	<b>20,833.4</b>

## Summary of Expenditure and Budget Request for Selected Funds

<b>Agency:</b>	<b>Power Authority</b>
----------------	------------------------

<b>Fund:</b>	<b>AA1000 General Fund (Appropriated)</b>
--------------	-------------------------------------------

	FY 2023 Actuals	FY 2024 Expenditure Plan	FY 2025 Funding Issue	FY 2025 Total Request
<b>Program:</b>				
PAA-1-0 Arizona Power Authority	-	1,000.0	(1,000.0)	-
<b>General Fund (Appropriated) Summary Total:</b>	-	1,000.0	(1,000.0)	-
<b>Expenditure Categories</b>				
FTE	-	-	-	-
Personal Services	-	-	-	-
Employee Related Expenditures	-	-	-	-
<b>Subtotal Personal Services and ERE</b>	-	-	-	-
Professional & Outside Services	-	-	-	-
Travel In-State	-	-	-	-
Travel Out-Of-State	-	-	-	-
Other Operating Expenditures	-	1,000.0	(1,000.0)	-
Capital Outlay	-	-	-	-
Non-Capital Equipment	-	-	-	-
Debt Service	-	-	-	-
Transfers-Out	-	-	-	-
	-	-	-	-
<b>Expenditure Categories Total:</b>	-	1,000.0	(1,000.0)	-

## Summary of Expenditure and Budget Request for Selected Funds

<b>Agency:</b>	<b>Power Authority</b>
----------------	------------------------

<b>Fund:</b>	<b>PA1112 Interest Income Fund (Non-Appropriated)</b>
--------------	-------------------------------------------------------

	FY 2023 Actuals	FY 2024 Expenditure Plan	FY 2025 Funding Issue	FY 2025 Total Request
<b>Program:</b>				
PAA-1-0 Arizona Power Authority	49.4	246.0	-	246.0
<b>Interest Income Fund (Non-Appropriated)</b>	<b>49.4</b>	<b>246.0</b>	<b>-</b>	<b>246.0</b>
<b>Summary Total:</b>	<b>49.4</b>	<b>246.0</b>	<b>-</b>	<b>246.0</b>
<b>Expenditure Categories</b>				
FTE	-	-	-	-
Personal Services	-	-	-	-
Employee Related Expenditures	-	-	-	-
<b>Subtotal Personal Services and ERE</b>	<b>-</b>	<b>-</b>	<b>-</b>	<b>-</b>
Professional & Outside Services	-	-	-	-
Travel In-State	-	-	-	-
Travel Out-Of-State	-	-	-	-
Other Operating Expenditures	49.4	246.0	-	246.0
Capital Outlay	-	-	-	-
Non-Capital Equipment	-	-	-	-
Debt Service	-	-	-	-
Transfers-Out	-	-	-	-
	-	-	-	-
<b>Expenditure Categories Total:</b>	<b>49.4</b>	<b>246.0</b>	<b>-</b>	<b>246.0</b>

## Summary of Expenditure and Budget Request for Selected Funds

<b>Agency:</b>	<b>Power Authority</b>
----------------	------------------------

<b>Fund:</b>	<b>PA1113 Fund Deposits Fund (Non-Appropriated)</b>
--------------	-----------------------------------------------------

	FY 2023 Actuals	FY 2024 Expenditure Plan	FY 2025 Funding Issue	FY 2025 Total Request
<b>Program:</b>				
PAA-1-0 Arizona Power Authority	19,869.4	20,349.0	-	20,349.0
<b>Fund Deposits Fund (Non-Appropriated)</b>	<b>19,869.4</b>	<b>20,349.0</b>	-	<b>20,349.0</b>
<b>Summary Total:</b>	<b>19,869.4</b>	<b>20,349.0</b>	-	<b>20,349.0</b>
<b>Expenditure Categories</b>				
FTE	9.0	9.0	-	9.0
Personal Services	434.3	500.3	-	500.3
Employee Related Expenditures	112.1	159.9	-	159.9
<b>Subtotal Personal Services and ERE</b>	<b>546.4</b>	<b>660.2</b>	-	<b>660.2</b>
Professional & Outside Services	358.6	400.9	-	400.9
Travel In-State	8.4	13.4	-	13.4
Travel Out-Of-State	27.0	35.5	-	35.5
Other Operating Expenditures	17,164.7	17,462.3	-	17,462.3
Capital Outlay	-	-	-	-
Non-Capital Equipment	22.9	31.9	-	31.9
Debt Service	1,730.3	1,725.8	-	1,725.8
Transfers-Out	11.2	19.0	-	19.0
	-	-	-	-
<b>Expenditure Categories Total:</b>	<b>19,869.4</b>	<b>20,349.0</b>	-	<b>20,349.0</b>

## Summary of Expenditure and Budget Request for Selected Funds

<b>Agency:</b>	<b>Power Authority</b>
----------------	------------------------

<b>Fund:</b>	<b>PA1114 APA - General Fund (Appropriated)</b>
--------------	-------------------------------------------------

	FY 2023 Actuals	FY 2024 Expenditure Plan	FY 2025 Funding Issue	FY 2025 Total Request
<b>Program:</b>				
PAA-1-0 Arizona Power Authority	-	-	-	-
<b>APA - General Fund (Appropriated) Summary Total:</b>	-	-	-	-
<b>Expenditure Categories</b>				
FTE	-	-	-	-
Personal Services	-	-	-	-
Employee Related Expenditures	-	-	-	-
<b>Subtotal Personal Services and ERE</b>	-	-	-	-
Professional & Outside Services	-	-	-	-
Travel In-State	-	-	-	-
Travel Out-Of-State	-	-	-	-
Other Operating Expenditures	-	-	-	-
Capital Outlay	-	-	-	-
Non-Capital Equipment	-	-	-	-
Debt Service	-	-	-	-
Transfers-Out	-	-	-	-
	-	-	-	-
<b>Expenditure Categories Total:</b>	-	-	-	-

## Summary of Expenditure and Budget Request for Selected Funds

<b>Agency:</b>	<b>Power Authority</b>
----------------	------------------------

<b>Fund:</b>	<b>PA1114 APA - General Fund (Non-Appropriated)</b>
--------------	-----------------------------------------------------

	FY 2023 Actuals	FY 2024 Expenditure Plan	FY 2025 Funding Issue	FY 2025 Total Request
<b>Program:</b>				
PAA-1-0 Arizona Power Authority	105.0	238.4	-	238.4
<b>APA - General Fund (Non-Appropriated)</b>	<b>105.0</b>	<b>238.4</b>	-	<b>238.4</b>
<b>Summary Total:</b>	<b>105.0</b>	<b>238.4</b>	-	<b>238.4</b>
<b>Expenditure Categories</b>				
FTE	-	-	-	-
Personal Services	-	-	-	-
Employee Related Expenditures	-	-	-	-
<b>Subtotal Personal Services and ERE</b>	<b>-</b>	<b>-</b>	<b>-</b>	<b>-</b>
Professional & Outside Services	-	-	-	-
Travel In-State	-	-	-	-
Travel Out-Of-State	-	-	-	-
Other Operating Expenditures	101.6	233.4	-	233.4
Capital Outlay	3.4	5.0	-	5.0
Non-Capital Equipment	-	-	-	-
Debt Service	-	-	-	-
Transfers-Out	-	-	-	-
	-	-	-	-
<b>Expenditure Categories Total:</b>	<b>105.0</b>	<b>238.4</b>	<b>-</b>	<b>238.4</b>